

Heart of the City

by Victoria Kiosak

■ PROFILDOORS

Victoria Kiosak
INTERIOR DESIGN

Overview

75 sq.m city apartment

Honored and delighted to share this eclectic, sophisticated and very inviting interior. Small city asylum for family of two - mother and son.

Due to a very unconventional floorplans it was a challenging experience to implement all wishes of two very opposite tastes and lifestyles blend together.

The whole site is built on an optical illusions where one room flows into another creating bigger space.

Highly practical, comfortable yet incredibly elegant this project reflects history and hopefully embraces the future.



Scope of Work

Interior design

- Concept design presentation
- Interior finishes timeline/milestones
- Estimates and purchasing
- Floor plan and furniture layouts
- Electrical and lighting coordination
- Interior elevations
- Appliance specifications
- Paint colours and millwork
- Furniture specsheets and installation drawing
- Comprehensive on-site supervision
- Flooring, decorative plumbing, lighting and hardware specifications
- Supervision of furniture and window treatment orders, shipping, delivery and installation



Scope of Work



Residential Service

- Stage furniture
- Stage artwork
- Home organization
- Furniture and decor moving and installation services
- Arrange contractors and repairment meeting
- Provide on-site inspactions during construction
- Provide assistance during move-in

The Brief

To design a city apartment with clean lines and strong architectural detailing in mind yet with a an oriental zest.

We developed a contemporary yet timeless design scheme to complement the original architectural features of high windows with a dash of modernism and masculine details. Mother wanted black and white palette while the son wanted more colorful environment.

Layering textures, colours and patterns to design a universal look that transcends boundaries. So all could enjoy beauty and warmth of a family home even in a small apartment for two.



Key requirements

The client wanted two spacious bedrooms and as much storage as possible.

Main priority of the Master bedroom was to create large wardrobe and to integrate an invisible home office space.

The second bedroom was very dark and uninviting for a school boy so it needed transformation and also a spacious closet.

Family has a huge Library they prefer with them in the city so to have them beautifully exposed was a must.

Fireplace was a special request.

Also the client wanted to have both shower and a bathtub in a tiny bathroom.

To create a kitchen with enough space for a storage and a top space plus a dining table for four.



Budget Agreed — GPB £ 211 824

Contractor £ 44 100

- ◇ Installation
- ◇ Architectural lighting
- ◇ Abb moon sky electrical sockets
- ◇ Fireplace

Furniture £ 57 634

- ◇ Master bedroom
- ◇ Kids bedroom
- ◇ Lving area
- ◇ Dressing areas

Kitchen £ 15 442

- ◇ Cabinetry
- ◇ Supplyes
- ◇ Hardware

Decor £ 65.984

- ◇ Window treatment
- ◇ Rugs
- ◇ Cushions
- ◇ Mirrors



Budget Agreed — *GPB £ 211 824*

Bathroom **£ 9044**

- ◇ Sanitary ware
- ◇ Furniture
- ◇ Tiles
- ◇ Fixtures
- ◇ Wall decor

**Lighting
Fixtures** **£ 6988**

- ◇ Ceiling
- ◇ Wall

**Art and
Accessories** **£ 28 986**

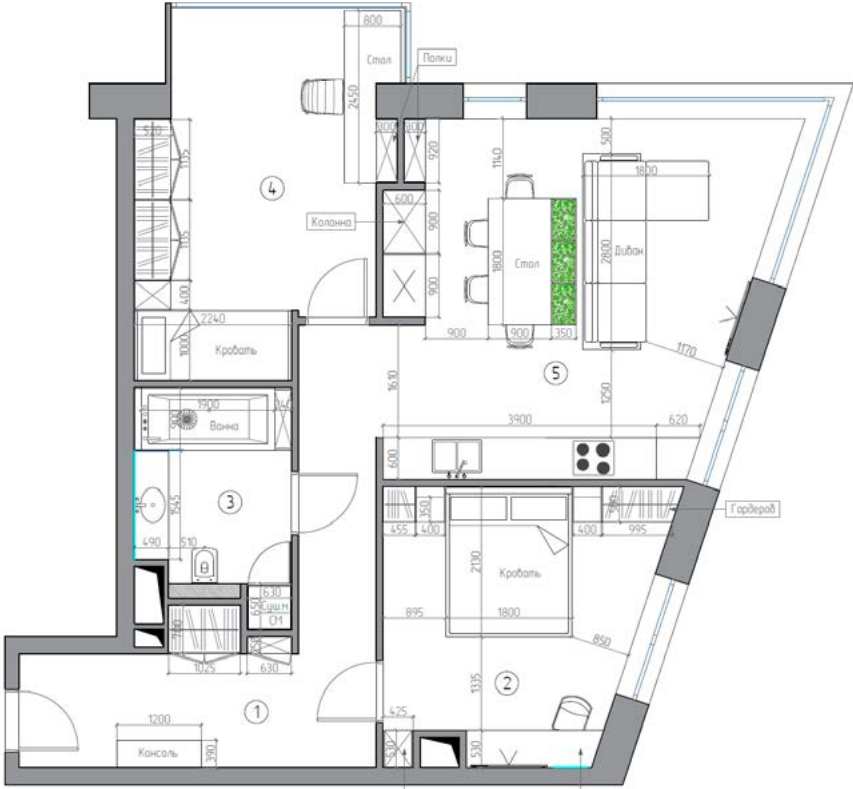
- ◇ Artworks
- ◇ Accessories

**Decoration
Materials** **£ 52.656**

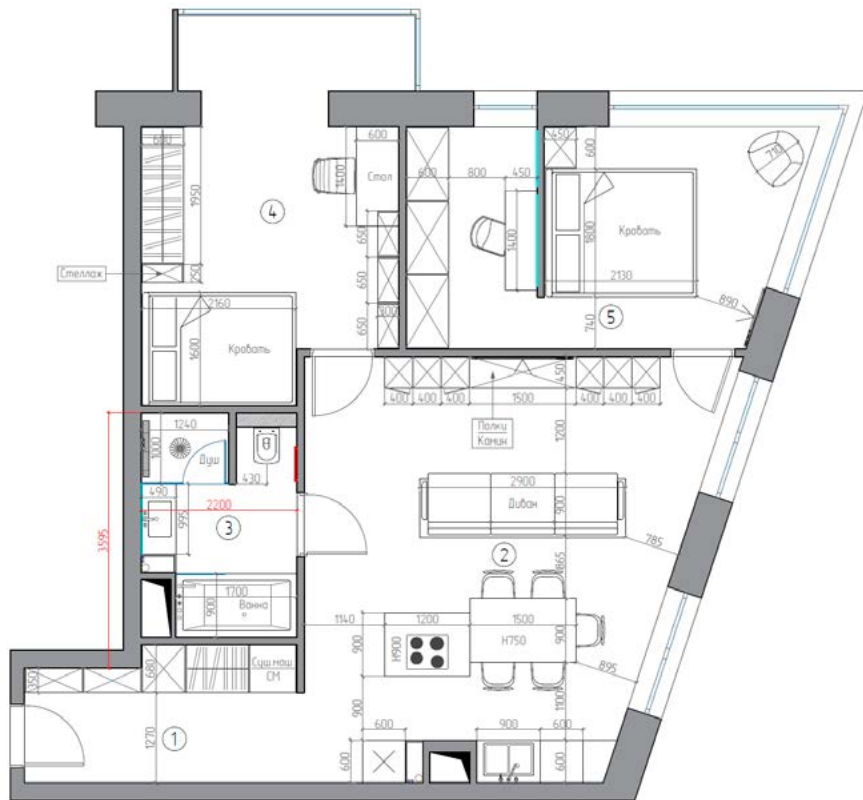
- ◇ Hardwood Flooring
- ◇ Doors
- ◇ Paint
- ◇ Heating
- ◇ Moldings



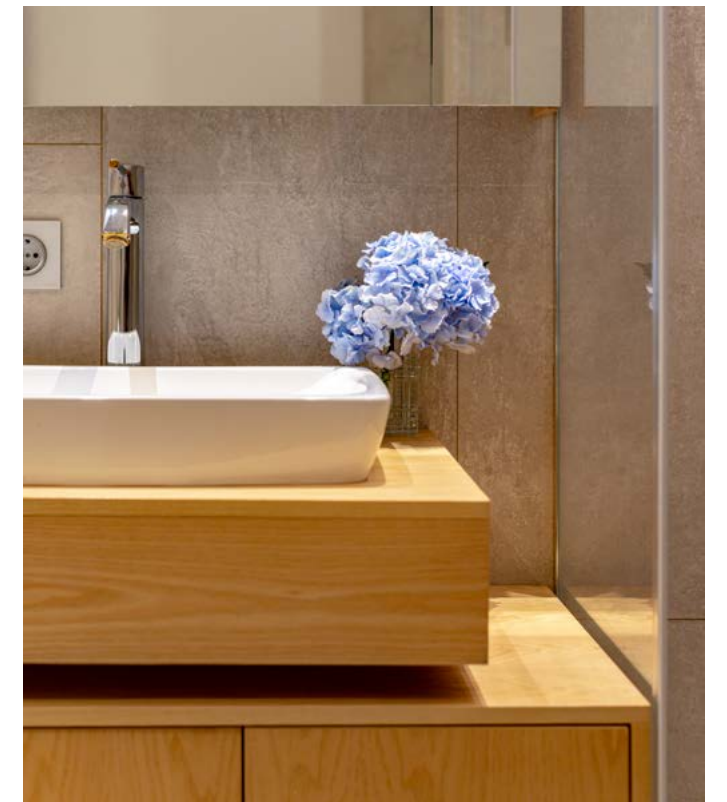
Proposal 1



Proposal 2



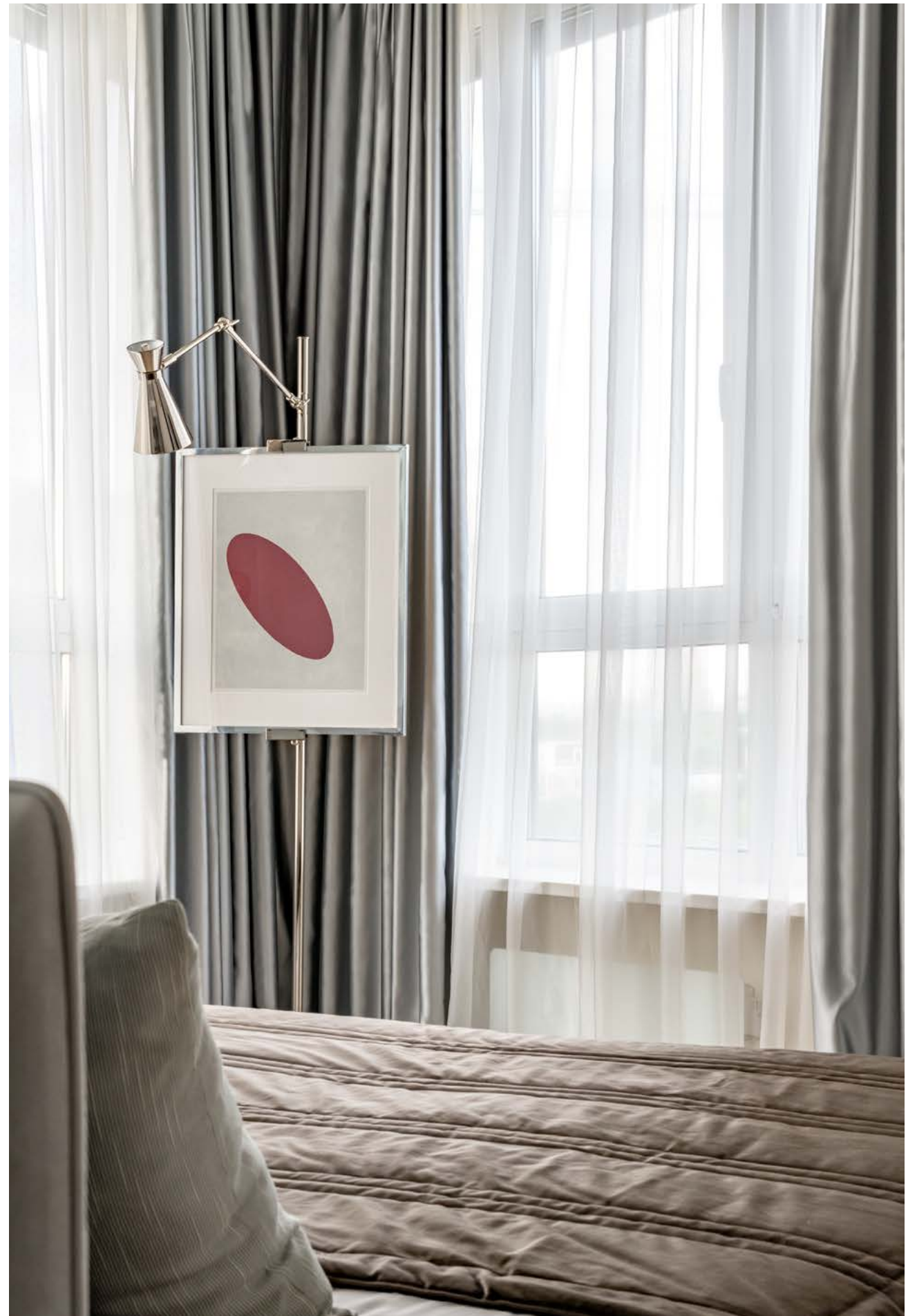
Completed Design



Result

Crisp, clean lines and uncluttered forms and sophisticated design is classic, timeless and fluid. Philosophy of this bedroom is gracious living is a major influence on the projects.

Adding a feminine floral accent in the form of soft pastel pink flowers and decorative objects soften this wardroom's black and gold American walnut venires. Lampshade base with a refined twist as it stands inside the master bedroom where bold monochrome is softened by a honey gold



Result

Our client was very passionate about cooking, so we created minimalist feel with a darker finish. The aim was to maximise the surface space in this tiny kitchen connecting an island to the dining table.

Ash-tree bespoke dining table lifted by soft linen chairs and gold lined tableware.

The calm and soothing colour palette in the master bedroom with amber colored accessories create a perfect sanctuary for a good night sleep.

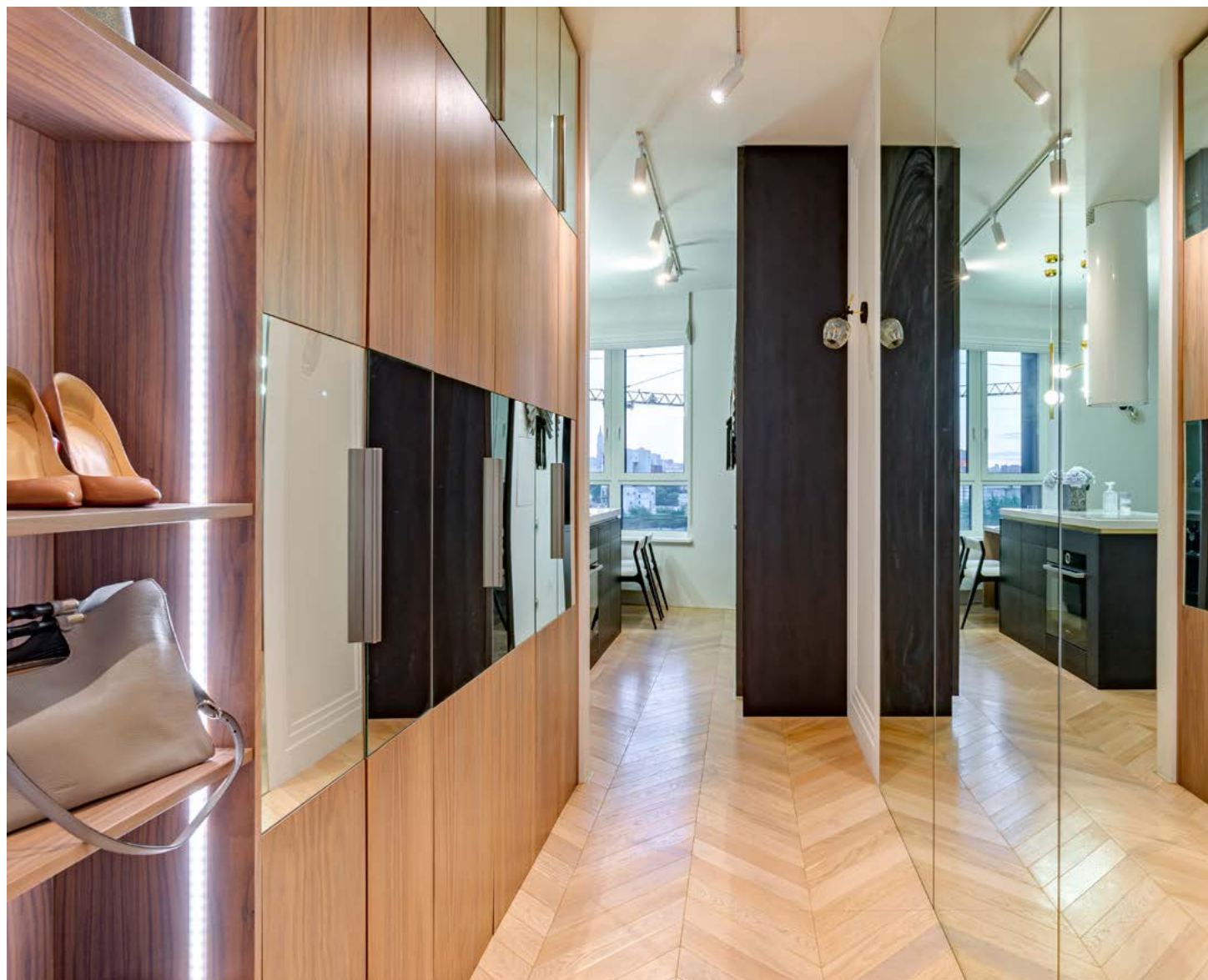
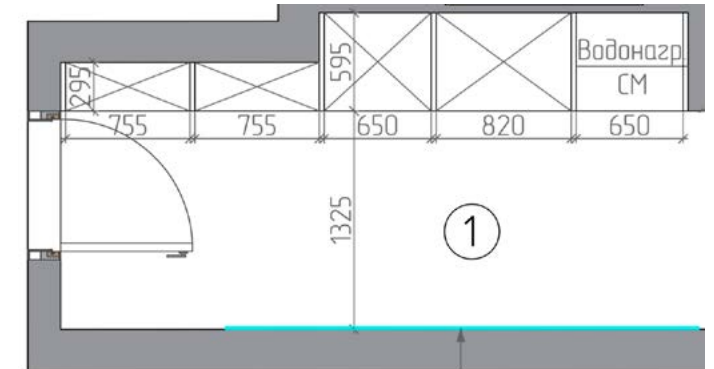




Hallway introducing kitchen and living area

Walk between floor to ceiling walnut closets, into this secluded Kitchen and Living room area. A combination of monochrome with soft gold geometric lighting and greenery in this kitchen space. Sharp finishes and floral touches of the rug a perfectly melted bringing together kitchen, dining and living area.

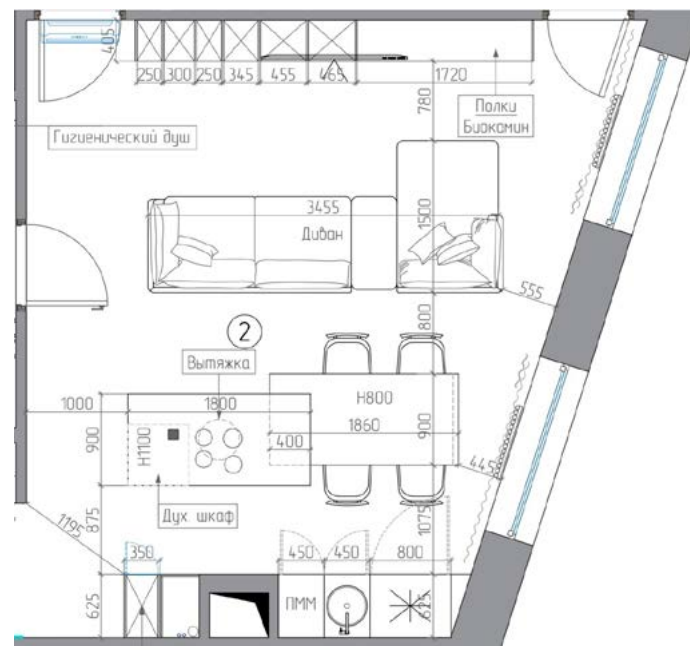
Heart of the City
by
Victoria Kiersak
INTERIOR DESIGN





Living room/Dining area

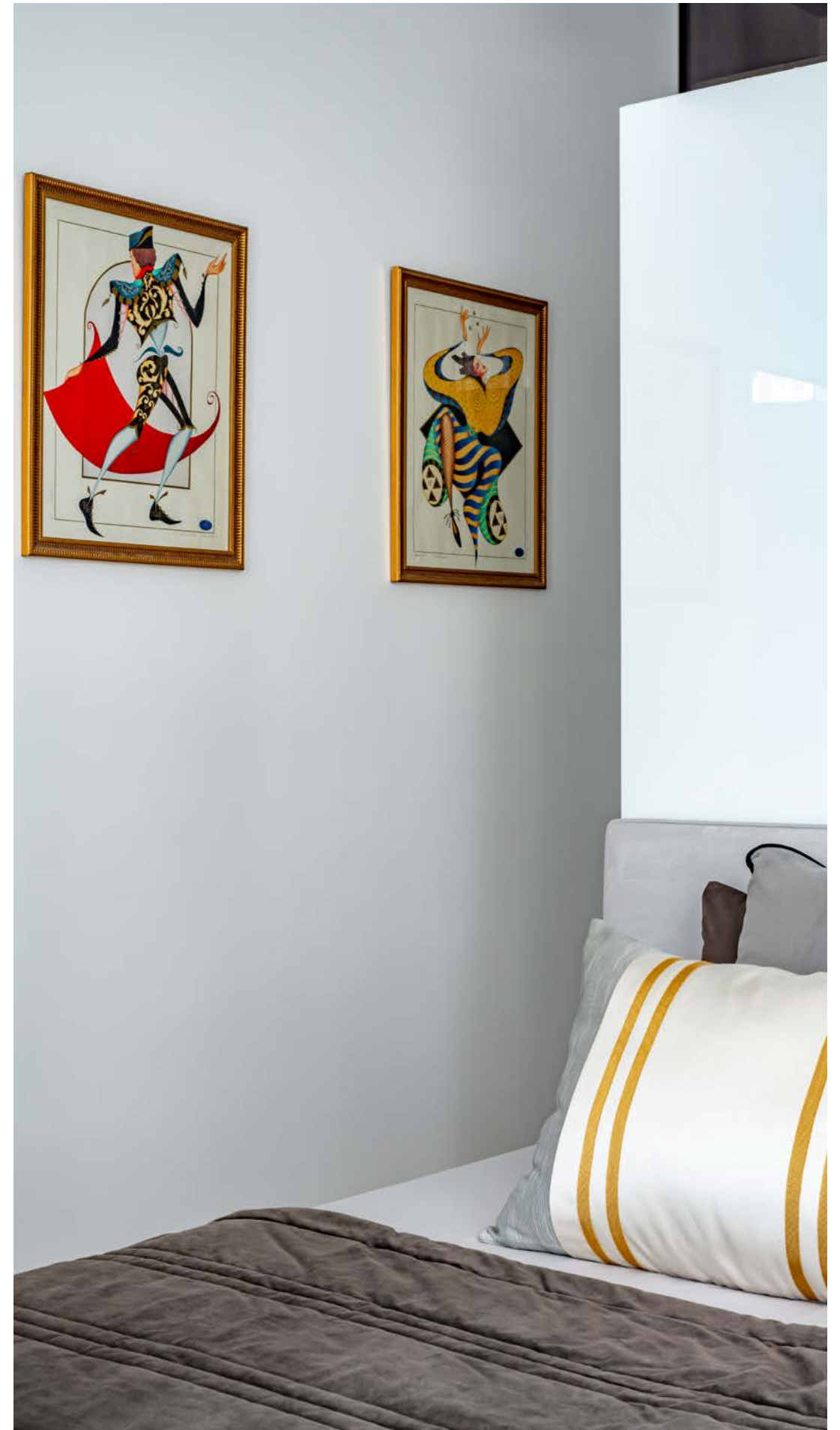
This modern kitchen inside this project, equates to spacious dining for our clients family, with a large kitchen island and dining table. Reading and relaxing are two essential design influences for any living room, we ensured that this Amura_Lab soft leather sofa by the fireplace was cosy, spacious and sturdy.



Master bedroom

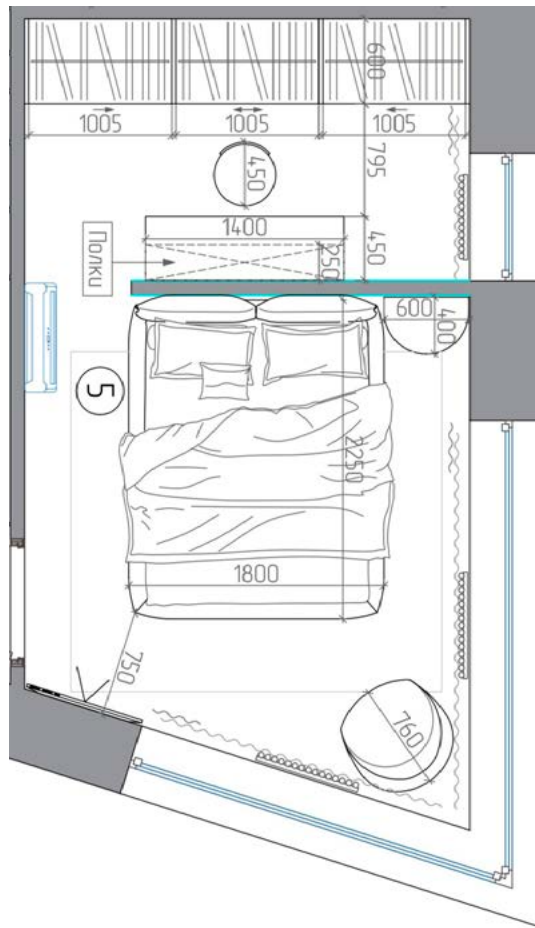
A steely ash and palette with heated tones of umber, cinnamon and gold patterns inside the master bedroom coordinates with the artwork and a hardwood flooring.

Degrades glass headboard separates the sleeping area from the wardrobe and hidden office escape.



Master bedroom

We carefully synchronised the colours of the client's artwork with the palette of the master bedroom where the piece resides. Lampshade base with a refined twist an an artwork as it stands inside the master bedroom. A subtle combination of textures and patterns in steel chocolate and pearly greys, accented with golden shades and soft boucle rug.



Bedroom

Inside the boy's room, is this perfectly placed bed a corner of calm and comfort.

Our designers specifically chose a neutral palette for sleeping corner to create a calm and relaxing space to enjoy after a busy day exploring Moscow. Navy blues contrasted with satin whites and muted caramel accents of walnut library.

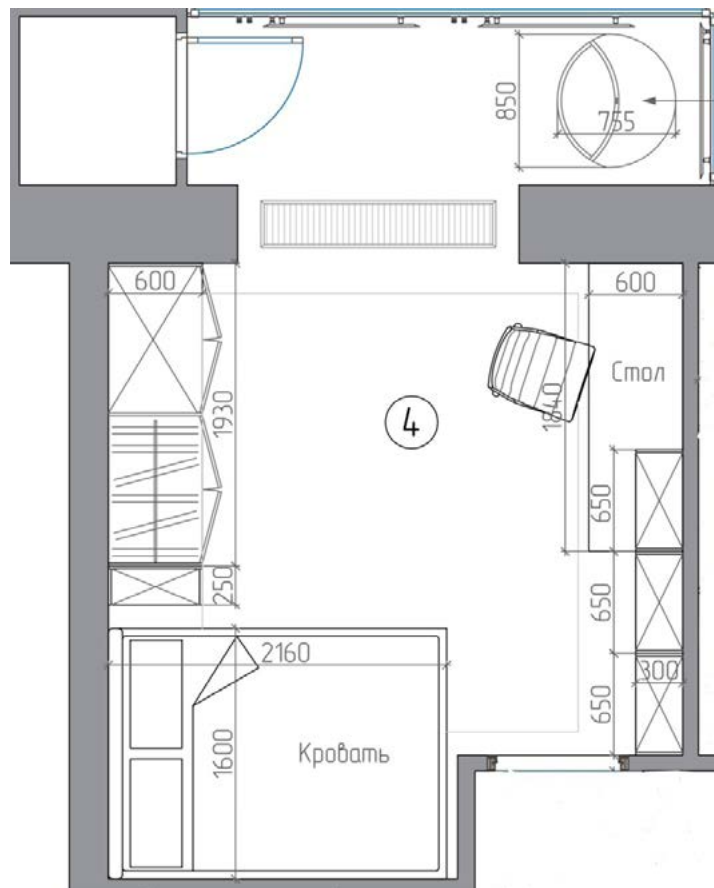


Study

Coordinating the library with the colour palette of the main space for a contemporary design inside a sons room.

The room embraces the natural light with neutral earthy tones and blue accents.

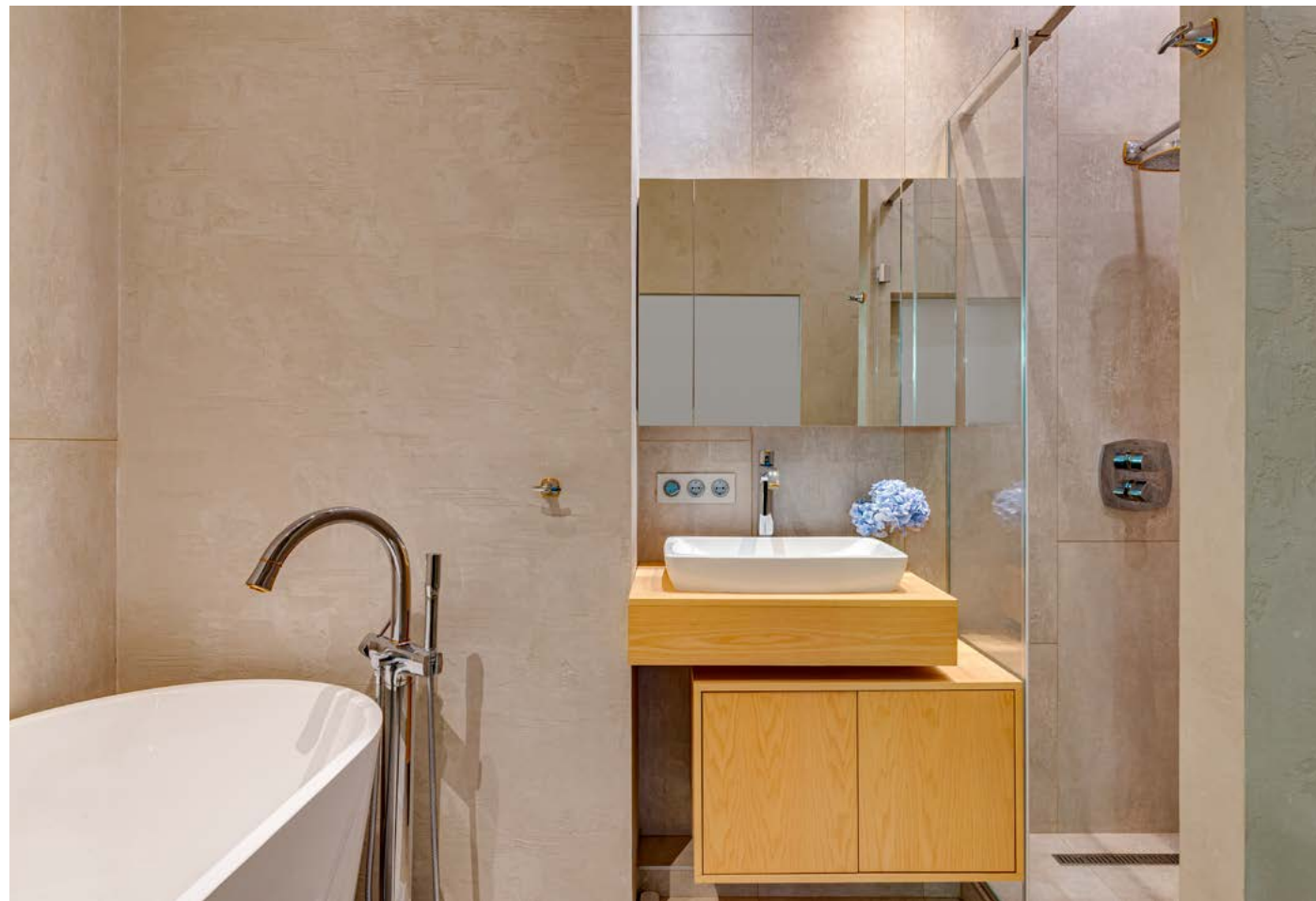
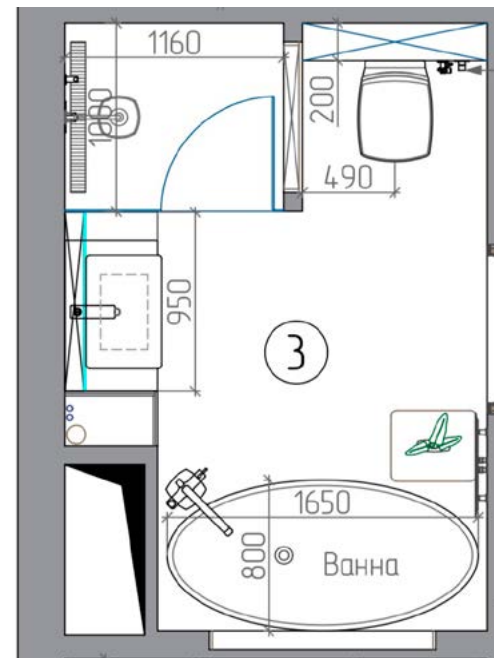
A showstopping flower arrangement can draw the eye to certain areas of a space and bring attention to the artwork against the subtle panelled wall and coordinates with the exact same arrangement at the kitchen top.



Bathroom

We love the simplicity of the space in this bathroom.

Grey-tone spacious bathroom with an alcove for a bathroom decoration and products. Solid oak cabinetry complimented with pure white finishes of sink and adding a sense of calm with soft bluish coloured flowers.



Ideal interior frame

■ PROFILDOORS

ProfilDoors is our oldest and most sufficient Door partner in all our projects since 2005. As the result of experience and collaboration with German and Italian partners, new technologies and materials, the company today is largest door company in Europe



Invisible Series in Icy White with soft touch finish were chosen for this project as a perfect invisible frame for interior.



The structure of the door casing allows installing a door leaf flush with the wall without casing a doorway with trims, thus creating an effect of an invisible door, which can be enhanced if the wall contains the same colour or texture as the colour and texture of the wall. Only fittings and a thin edge, framing the door leaf, can help to see the door in your interior.



ProfilDoors perfect doors since 2002



Design Pieces

I am very inspired by art. My Father was an artist making it a very important part of my life, affecting me on a deeply personal level.

I do my best to make every project an ode to the art world and all the extraordinary artists that have shaped me and my career thus far.



Kyler vases handcrafted in bronze



Unknown balinese artist



Wendoverart group



Surfer Girl by ABLO



S. Марионетки «Деерверк»
by S. Ivanov 1996

Thank you letter

We have chosen Victoria for her ultimate balance between timeless luxury and intelligent design. We also realized that floorplans of the site were very complicated and wanted every inch of the apartment to be not only exquisitely stylish but also as much functional as possible. So we needed Victoria as she's well known for her commitment to tailored interiors, that enrich interior spaces through an exceptionally skilled and personalised service

She is also very well known for her very solid professional ethics. To maintain her reputation, Victoria understands that her clients must always be delighted with what she delivers thus superb customer service and clear client communication is indeed paramount in her work.

She does have a magical eye but above all she is always there to implement clients vision, whatever it may be. We wanted minimalistic black and white color palette with a hint of oriental fleur. Deepest blue for the son's bedroom was very refreshing like a deep inhale of an ocean breeze.

Victoria and her design studio does provide more than just design – she provides a detailed, comprehensive service approach to her clients so they can expect a complete first class service to match the most particular requests.

Complete turnkey service enables her to deliver on every crucial detail. Our small city apartment is a living dream for our family in the very center of the city.

With a huge appreciation
Julia Skaletsky

Heart of the City
by

Victoria Kiersak

INTERIOR DESIGN

