

# Great as Britain

*by Victoria Kiosak*

■ PROFILDOORS

*Victoria Kiosak*  
INTERIOR DESIGN



## A. Overview

---

### **Moscow House 205 sq. m.**

Interior Designer is usually involved in the pre-construction phase when the process of creating a project design begins. In this phase our team was hired to help. Our design team consisted of one architect including Interior designer, an engineering team and team of specialists.

Putting an idea on paper is just one step towards transforming an idea about the project into a reality.

While most design work is carried out during the pre-construction phase of a Project, Design team, including Interior Designer, continued to provide our services during the construction phase. In this phase, Interior designer work in tandem with architects, contractors, and manufacturers to ensure all physical structures and architectural elements are aligned with the Owner's vision.

The couple has two grown up children visiting from abroad. Who wanted less traditional and more art-deco styling. Since the shell of the house was built in traditional English style we dared to style interior with more modern London Spirit as we see it with a hint on art-deco.







# Scope of Work

## Space planing and interior design

- Interviewing clients to determine their needs, schedules and buget
- Establish functional and aesthetics goals and concept
- Provide space plans with furniture layouts
- Develop budgets on all interior finishes and furnishing
- Assist in materials, finish and furnishing analisys, creating cpecsheets
- Desingn all interior details
- Coordinated furniture layouts with lighting, electrical, water and heating plans
- Coordinated fineart and decorative accessories





# Scope of Work



## Constraction documents and project administration

---

- Demolition/New partition plans
- Lighting/Electrical/Smart home plans
- Ceiling plans
- Wall and floor finish plans
- Interior details, including cabinets, millworks, etc
- 3D rendering
- Coordinate and review plans with all contractors
- Maintain project schedules
- Review bids and pricing
- On-site inspections during costruction works
- Provide assistance during move-in
- Provide punch lists of all work to be completed





# The Brief

We designed this new build home to reflect the client's personal taste and style: plain clean look and crisp total whites, with a hint on art-deco patterns and some artwork.

Considering traditional architecture of the our first proposal was more traditional approach with warm and vibrant textures and colours.

but client decided to take more formal, luxurious and posh direction.









## Key requirements

Full of light very posh and very stylish all white interior.

The client wanted big kitchen and enough space for a professional cook.

The client also was very specific about not having bathtubs.

Biggest room with a walk-in wardrobe was given to the daughter so master area was moved to a smaller room with big prospects.

The main priority was to make enough bathrooms for every bedroom and enough storage space for each.

Green room was also reconsidered and rebuild for more formal dining area.

Smart home with remote security controls including fire detectors alarm





Budget Agreed — GPB £ 901 885

Contractor                    £ 153 546

- ◇ Installation
- ◇ Architectural lighting
- ◇ Abb moon sky electrical sockets
- ◇ Fireplace

Smart home system                    £ 13 700

Furniture                    £ 274 140

- ◇ Four bedrooms
- ◇ Dininig area
- ◇ Living area
- ◇ Dressing/Storage areas

Kitchen                    £ 168 535

- ◇ Cabinetry
- ◇ Supplyes
- ◇ Hardware

Bathrooms                    £ 65 984

- ◇ Sanitary ware
- ◇ Furniture/cabinetry
- ◇ Tiles/stone
- ◇ Fixtures





The Budget

Budget Agreed — *GPB £ 901 885*

**Decor** **£ 109 398**

- ◇ Window treatment
- ◇ Rugs
- ◇ Cushions
- ◇ Mirrors
- ◇ Wall decor

**Lighting  
Fixtures** **£ 44 940**

- ◇ Wall
- ◇ Architectural

**Art and  
Accessories** **£ 18 986**

- ◇ Artworks
- ◇ Accessories

**Decoration  
Materials** **£ 52 656**

- ◇ Hardwood Flooring
- ◇ Doors
- ◇ Paint
- ◇ Heating
- ◇ Moldings





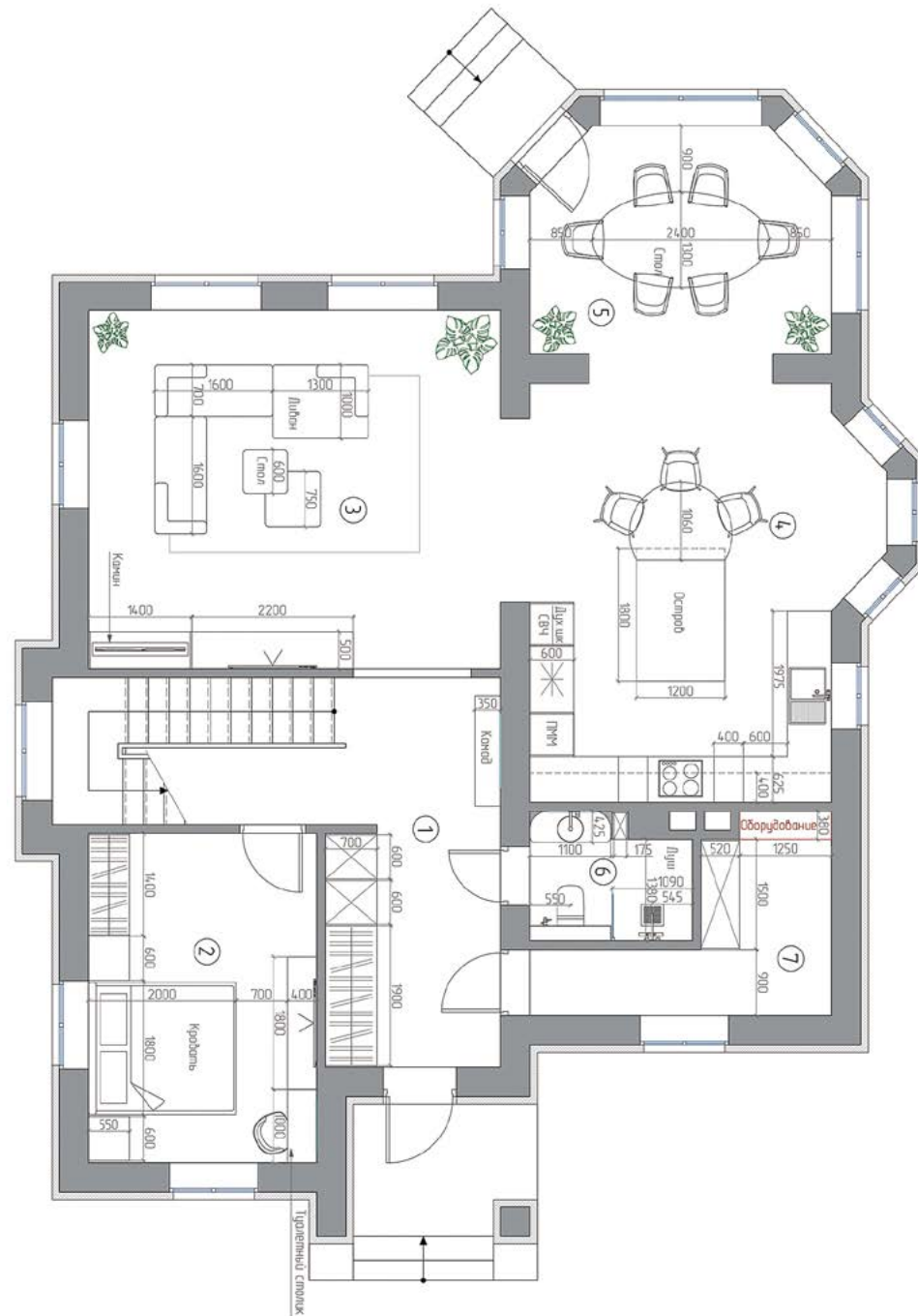
Great as Britain  
by  
*Victoria Kiessak*  
INTERIOR DESIGN





## Proposals

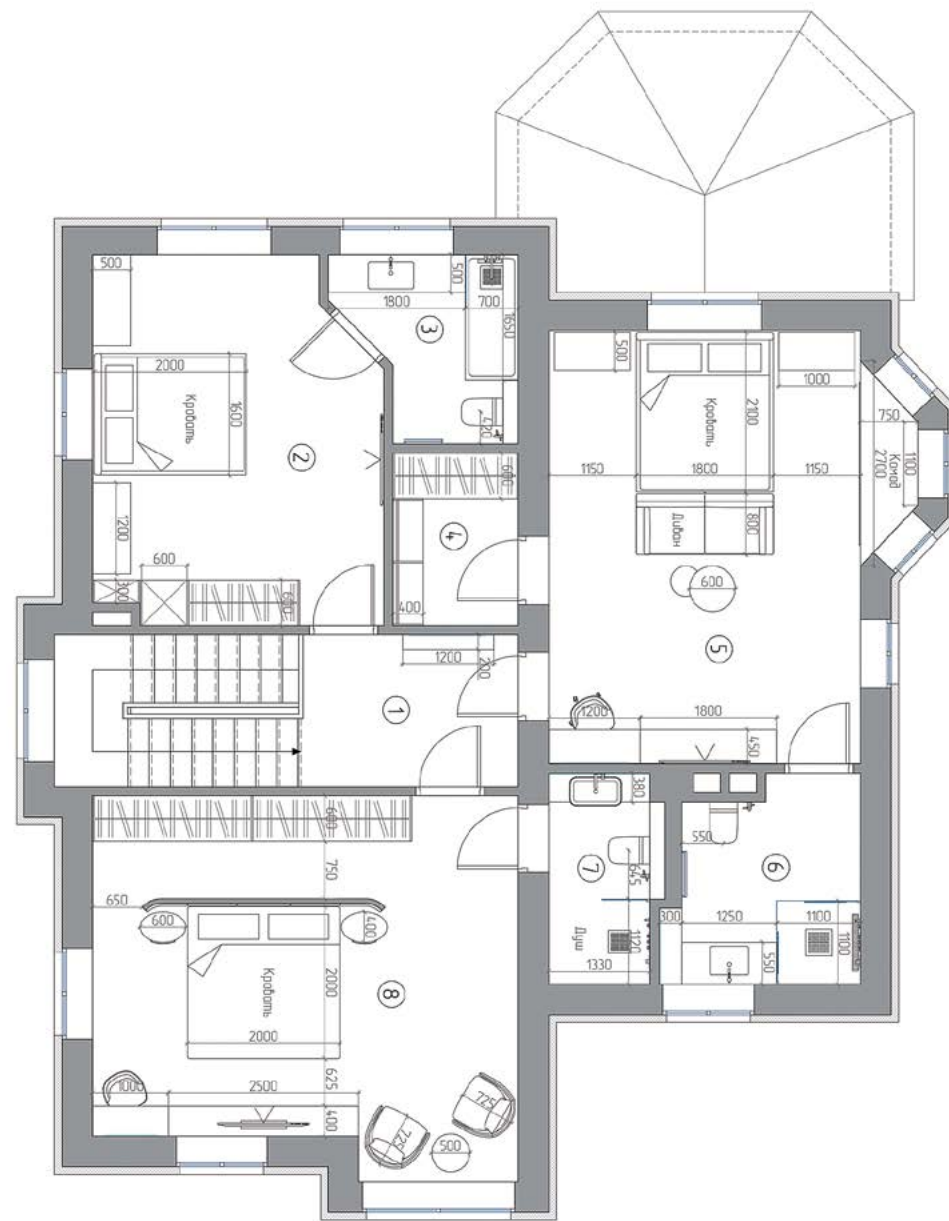
1<sup>st</sup> floor





## Proposals

2<sup>nd</sup> floor





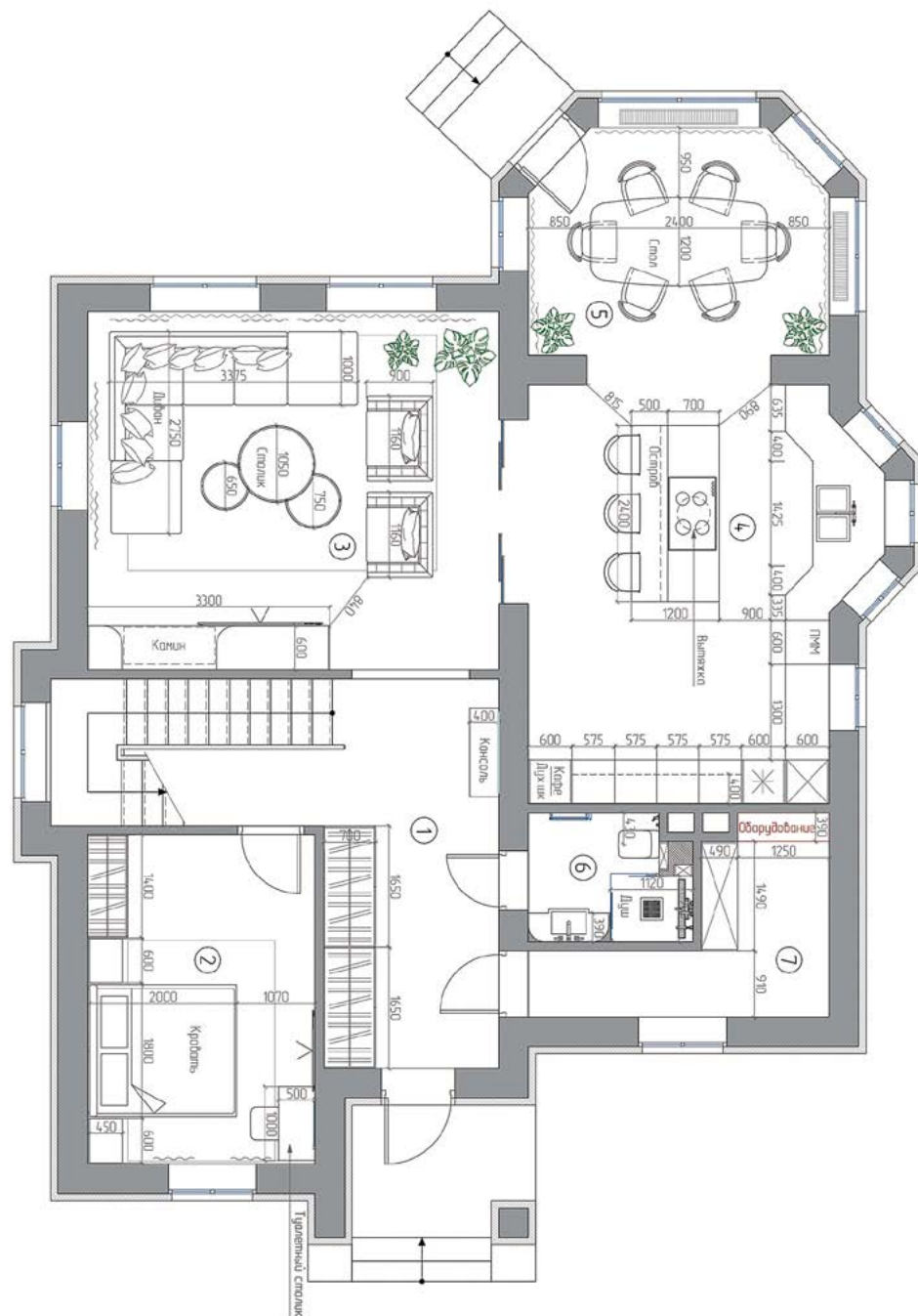
## Completed Design

Great as Britain  
by  
Victoria Kiersak  
INTERIOR DESIGN





# Completed Design





## Completed Design

### 2<sup>nd</sup> floor





## Result

From the very concept development stage, the team made sure that we were on the same wavelength with clients and that the project would be created exactly as intended.

We started all aspects of the design with a concept – this was illustrated to the client through imagery, sketches, materials and 3D rendering.

We then took these inspirations through to the schematic design stage, with more technical drawings, in order to convey our vision to the client.

Continuing to add details to each and every individual aspect of the project right up until installation, liaising with our suppliers and contractors to achieve a design of an impeccable quality.

Flawless interior with luxurious details in muted monochrome palette is posh yet very relaxing.







## B. Location

The house is hidden in deep woods in a residence area outside Moscow. The one was created for a settled lifestyle just 30 minutes by car away from all the Theaters and Museums and every cultural event the Capital can offer.

Surrounded by green forests and river Pahra it has everything a modern family needs including a Playground for kids and a local groceries.





Architectural concept of the house assumed the maximum use of natural materials that ensured the space filled with freshness, purity, and authenticity of surrounding nature.

#### ПРИНЦИП РАБОТЫ ЭНЕРГОСБЕРЕГАЮЩЕГО К-СТЕКЛА



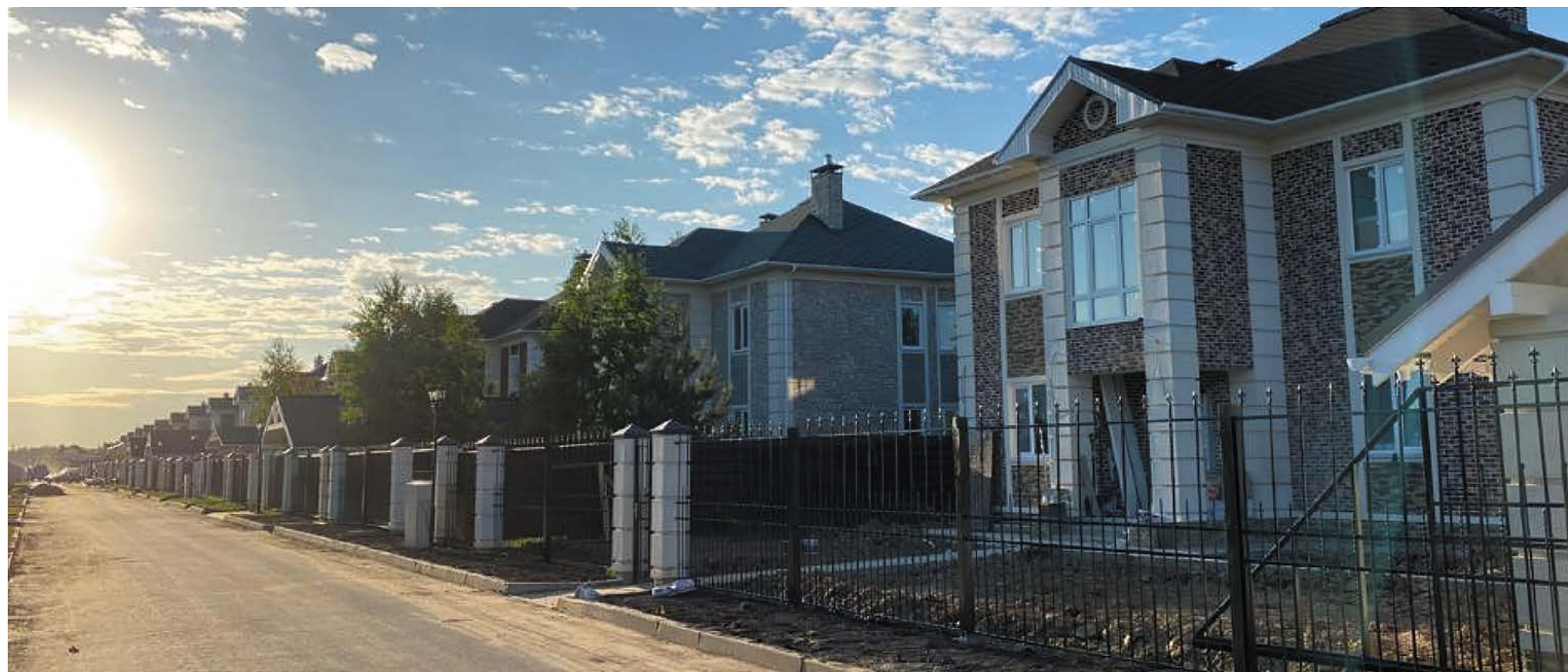
The proposal was to use as many eco-friendly materials as possible. Including change from dark plastic windows from the previous contractor (before) into white hardwood windows with the energy-saving K-glass (after).



*Before*

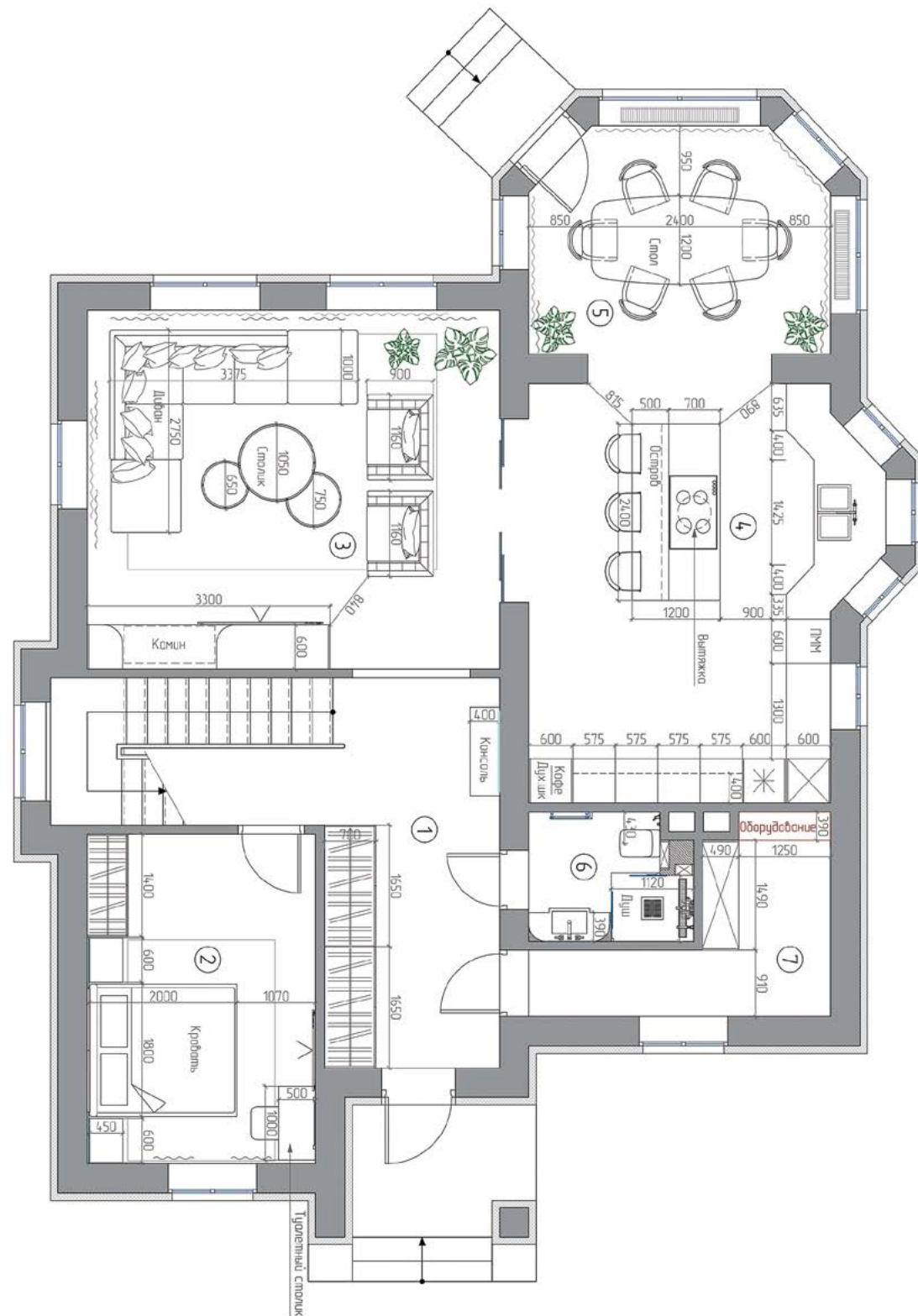


*After*

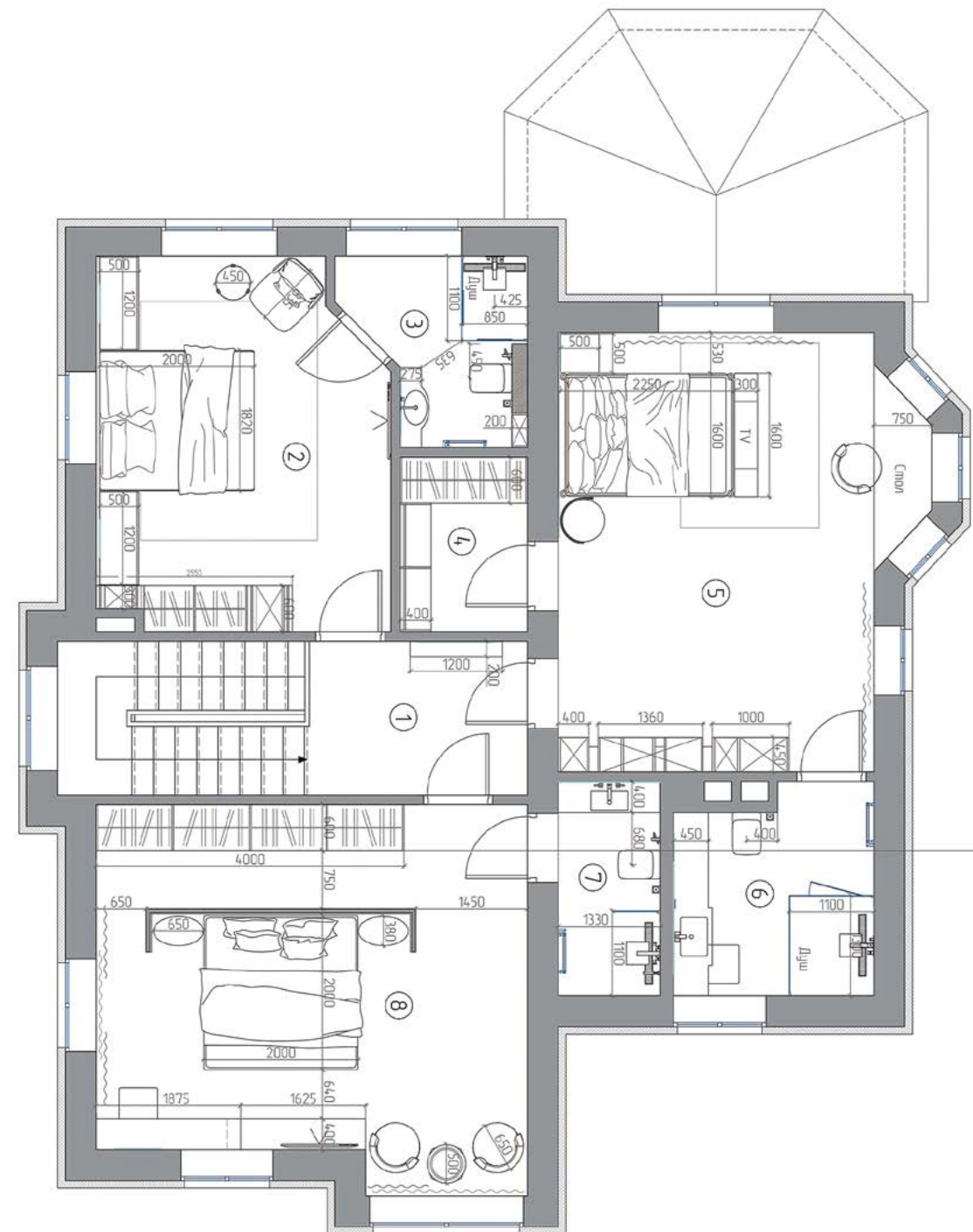




## C. Ground Floor



## C. Second Floor





## Ground Floor

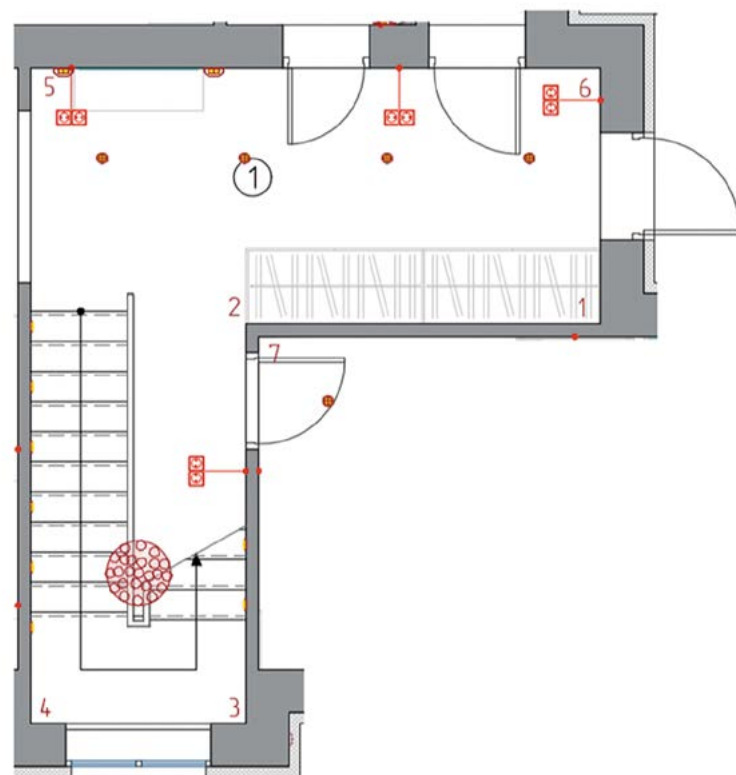
Every living area is the one we start every project. It is the very heart of the home and space from where we start exploring our clients and setting the whole mood of the future home. And this time it is all about nude shades, fresh greens and monochromatic palette.





## Entry Hall

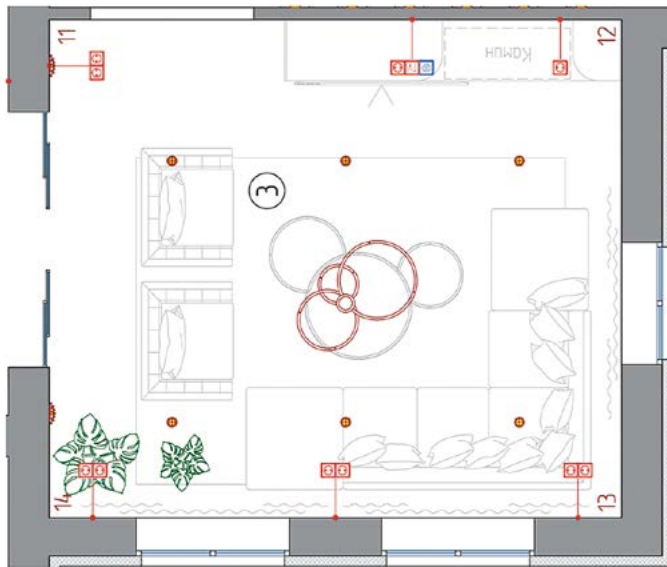
The point entrance of the house is showing the brightest sides. Victory of design over the ordinary, style over mediocrity, and good taste over compromises. The selection is the entrance to the mystic atmosphere of the whole project.





## Living area

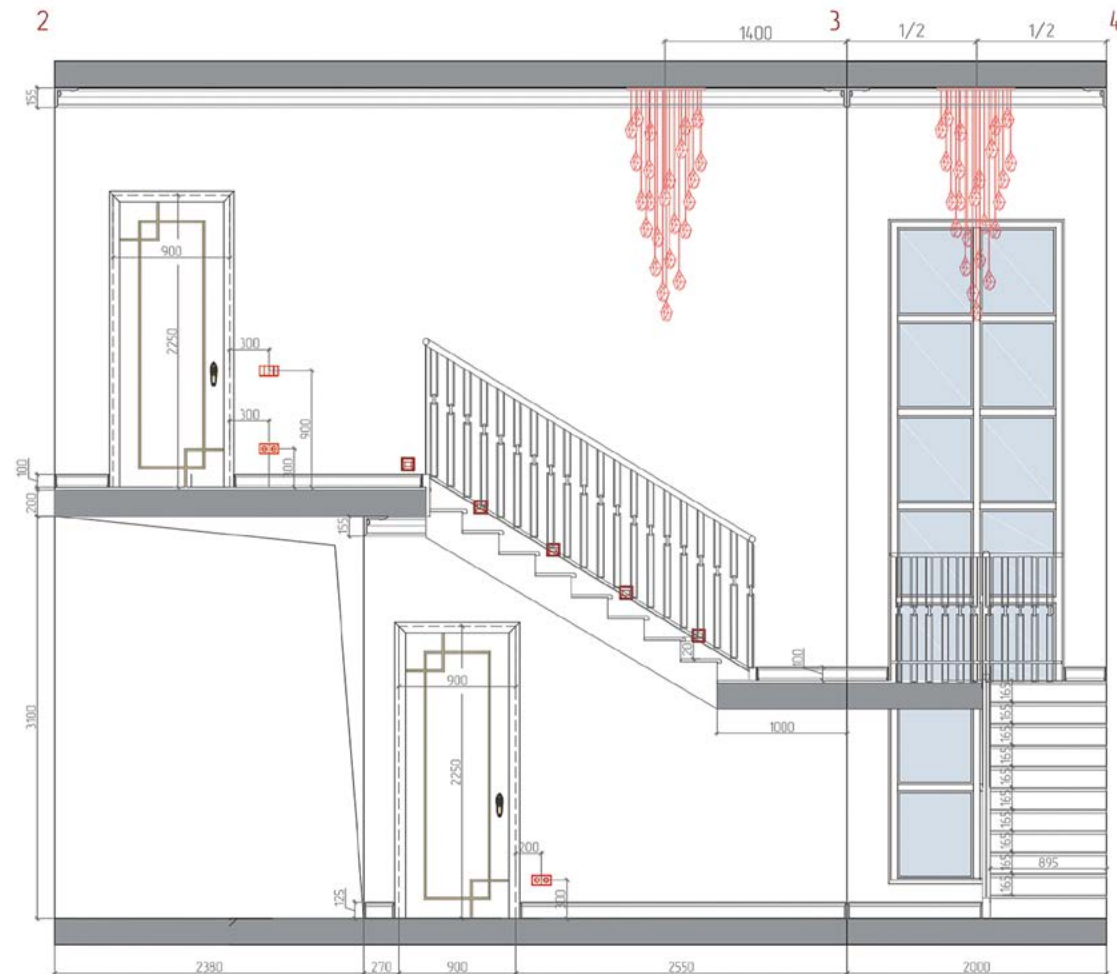
The overall concept of the living space was developed with the principle of combining elements and textures, which together create an optical harmony and perfection. Stone, wood, and metal connected smoothly bending the light and look as if they are a single whole organism. The interior has many straight lines that smoothly flow into wave-like shapes, rounded shape of some furniture, fireplace and lighting fixtures. Lounge area by the fireplace with a corner sofa is the area for family time as much as it is for guests reception.





## Stairway

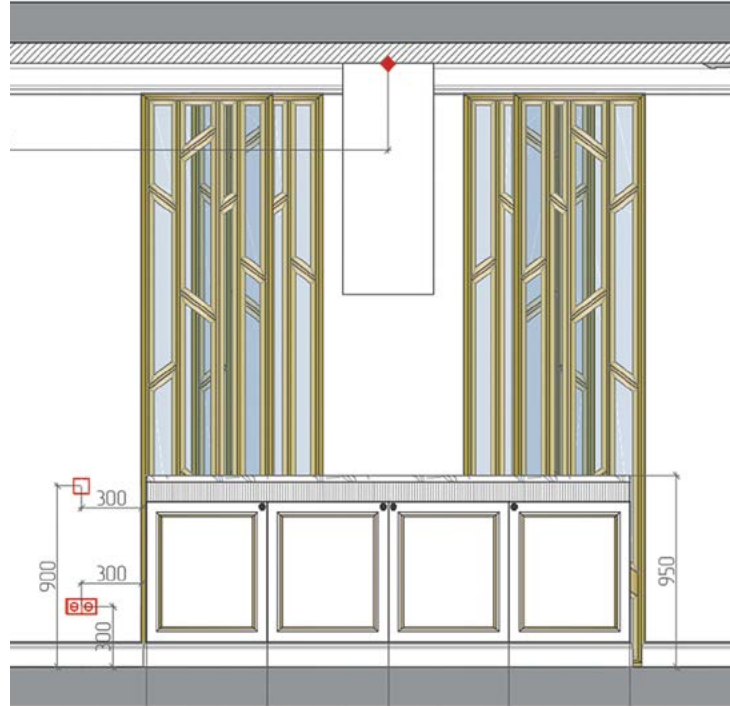
Half of success in interior design depends on how the lighting is spread out. In this particular project, in addition to a large number of windows, we increased artificial light sources to make the house warm.





## Kitchen

The kitchen, is somewhat hidden from prying eyes behind a gorgeous glass. The door is so aesthetically inscribed in the space that, if there were no handle on the plane surface, it would be difficult to understand that there is a full-fledged room behind it.

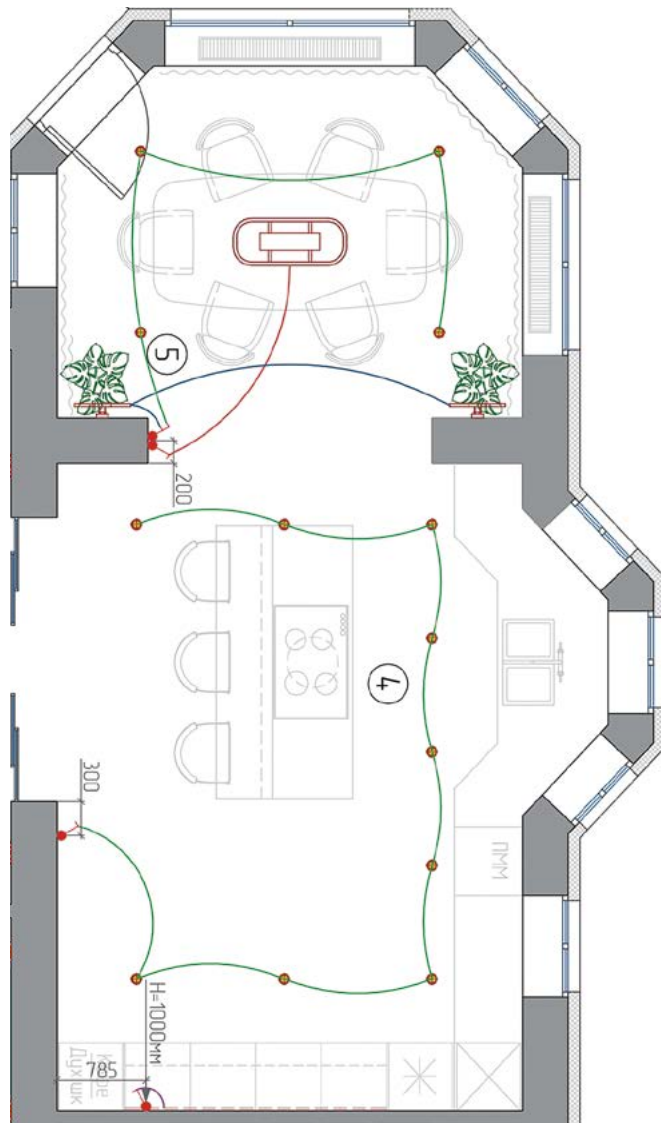




## Kitchen and Dining area

Elements of the kitchen area are made of natural stone according to designer's schemes. The marble island is framed with brass walls and is equipped to be accompanied by high bar stools to create a more informal image of the kitchen. Bella Figura rectangular Chandelier illuminates the stone dining table and can adjust cold air shades to the specific mood and atmosphere with comfort of Caracole dining chairs.

Great as Britain  
by  
*Victoria Kiessak*  
INTERIOR DESIGN

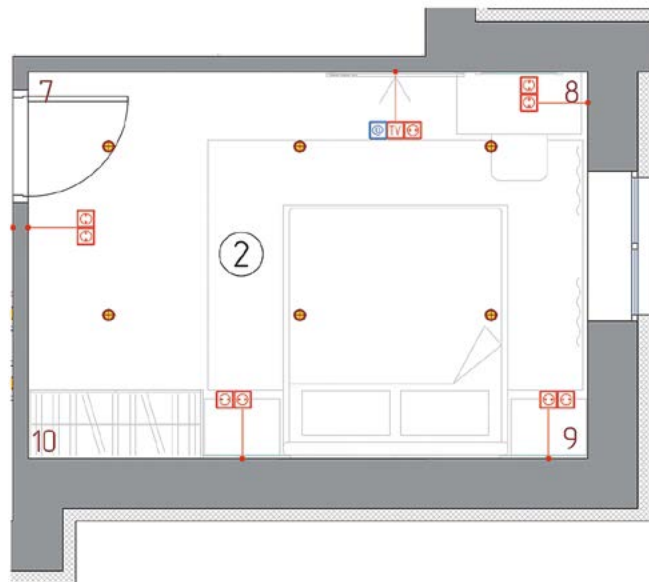
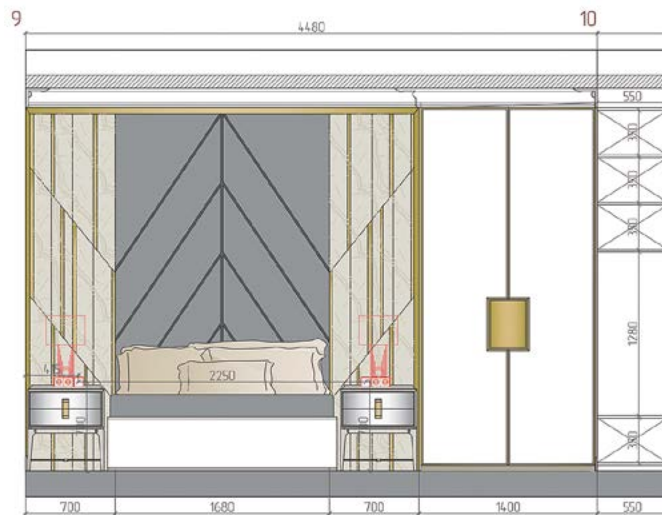




## Guest room

The magic of simple lines: guest bedroom. This room is full of custom design accents and furniture. Mirror, stone and brass headboard, bedside tables all play role of a set-piece, with more classical wooden wardrobe.

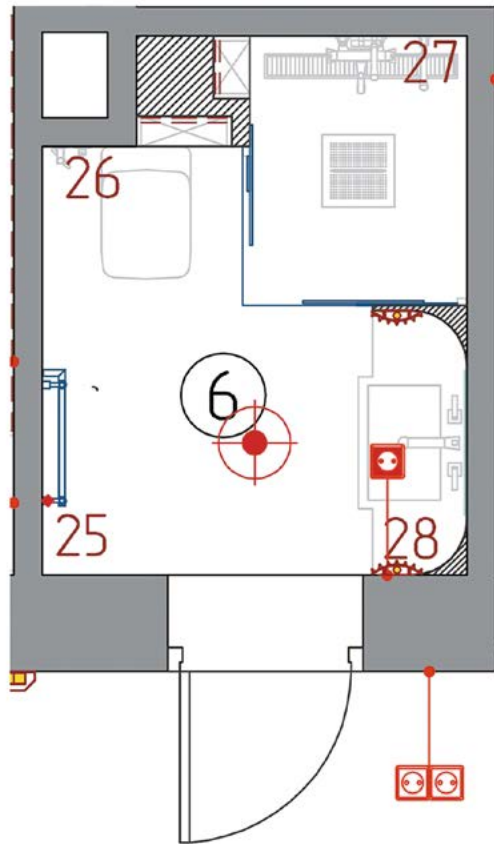
Great as Britain  
by  
Victoria Kiersak  
INTERIOR DESIGN





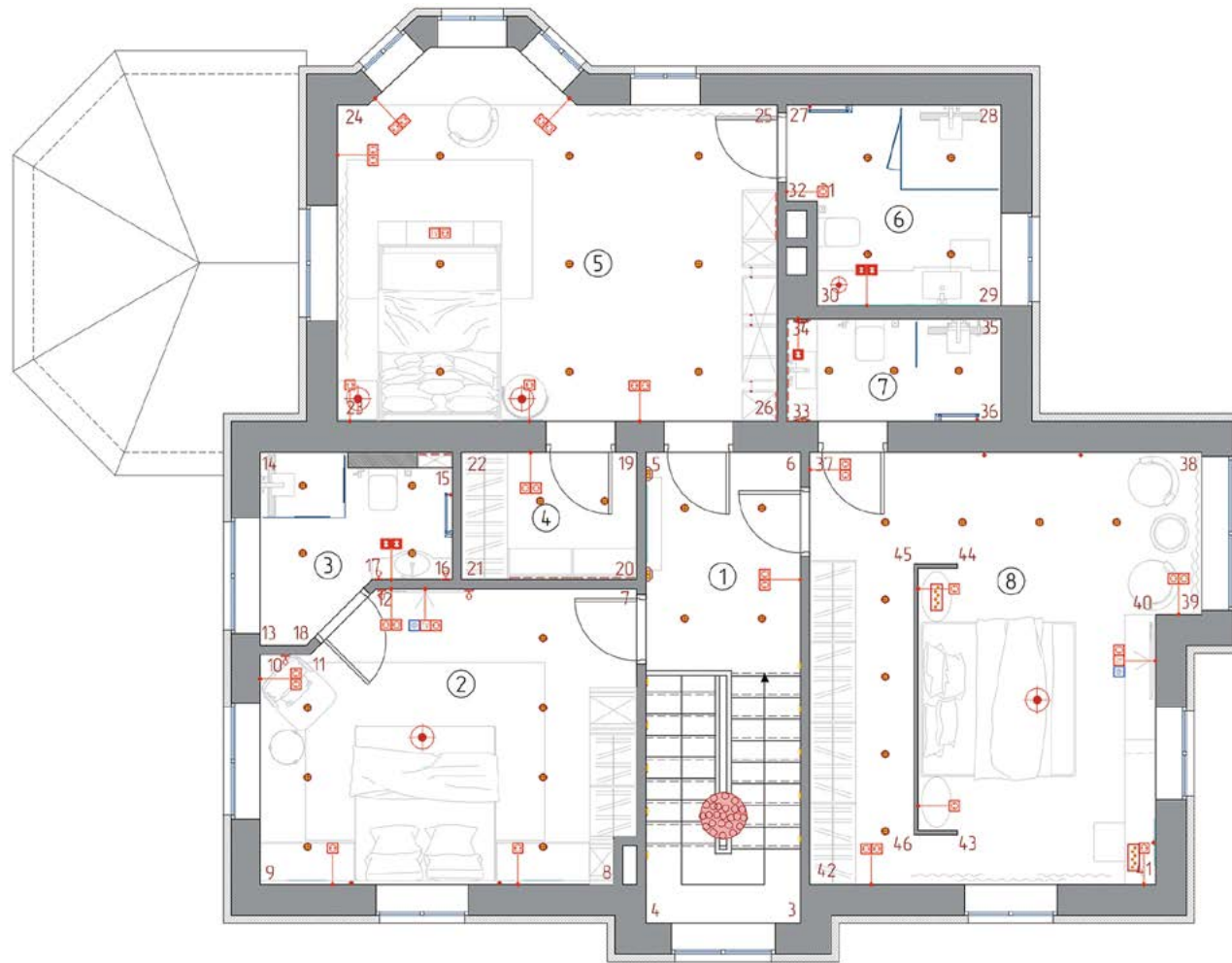
## Powder room

We know what emotions to expect when we present our powder rooms to our clients. For those who want more there's always a shower by CISAL and Art-Ceram sanitary ware completed with stone and mirror mosaics.





## Second Floor





## Master area

---

Calm & serene, but with the bright and unexpected mirror wall that separates sleeping area from the speciose closet at the end of the room.

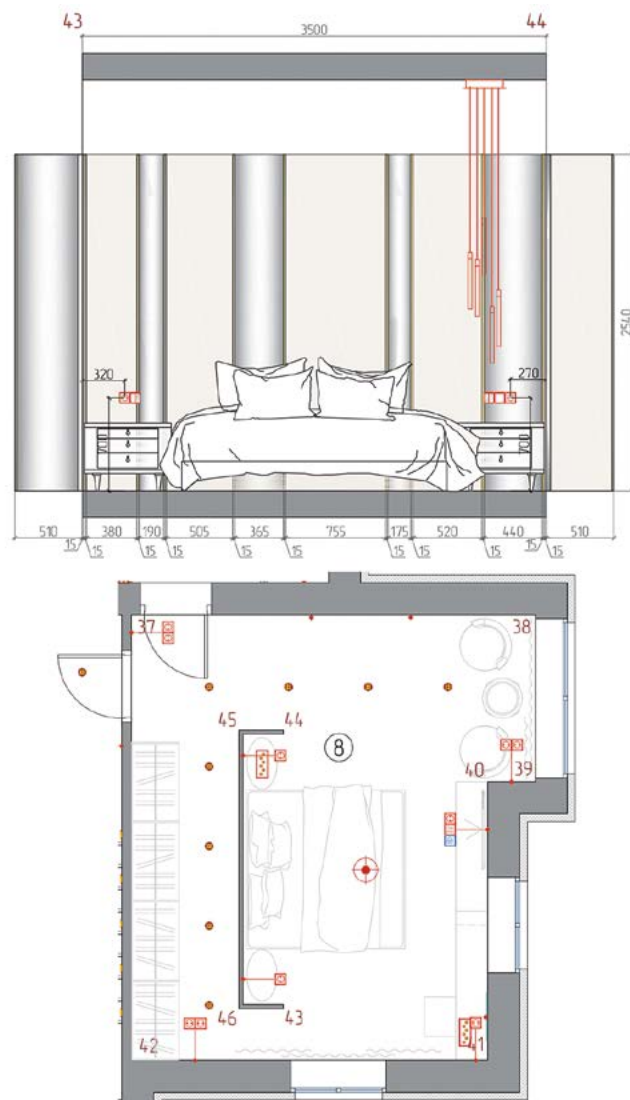
Great as Britain  
by  
*Victoria Kiersak*  
INTERIOR DESIGN





## Master Bedroom

Fancy boudoir and comfortable reading nook - that's how we draw the changeable eternal summer vibe into this small but roomy master bedroom.

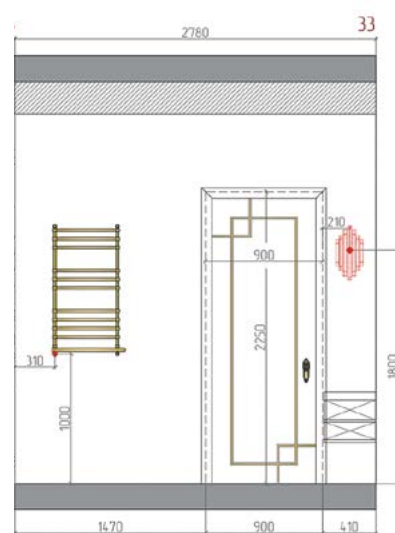
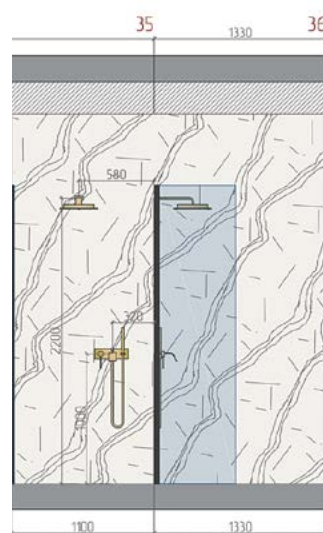
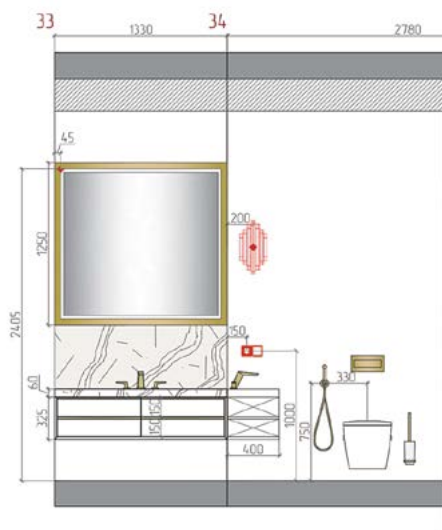




## Master bath

Every bedroom should absolutely have a beautiful yet comfortable bathroom even if it's tiny nevertheless it should bring joy every time you need one.

Because of it's size it might not be the perfect one for a master area but it is subtle in its pearlessness.



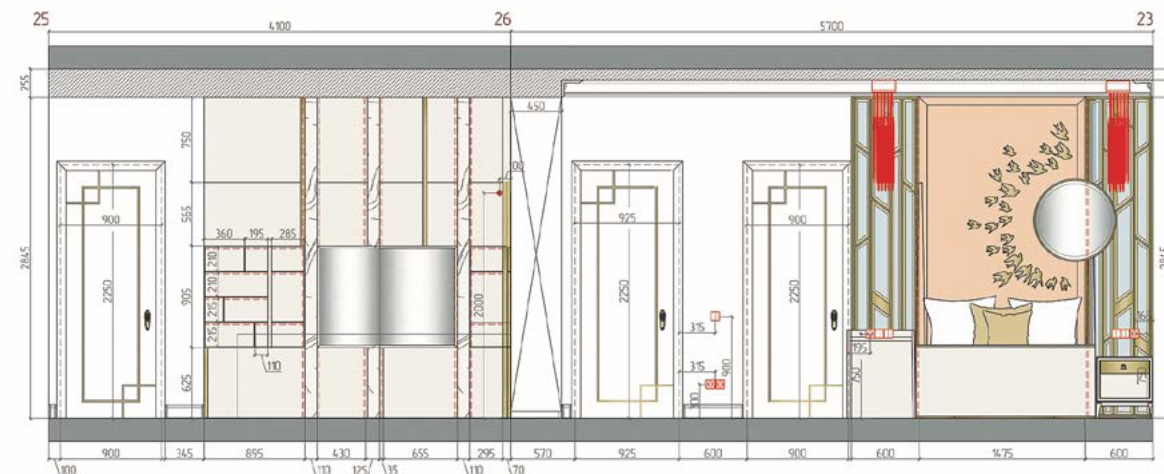
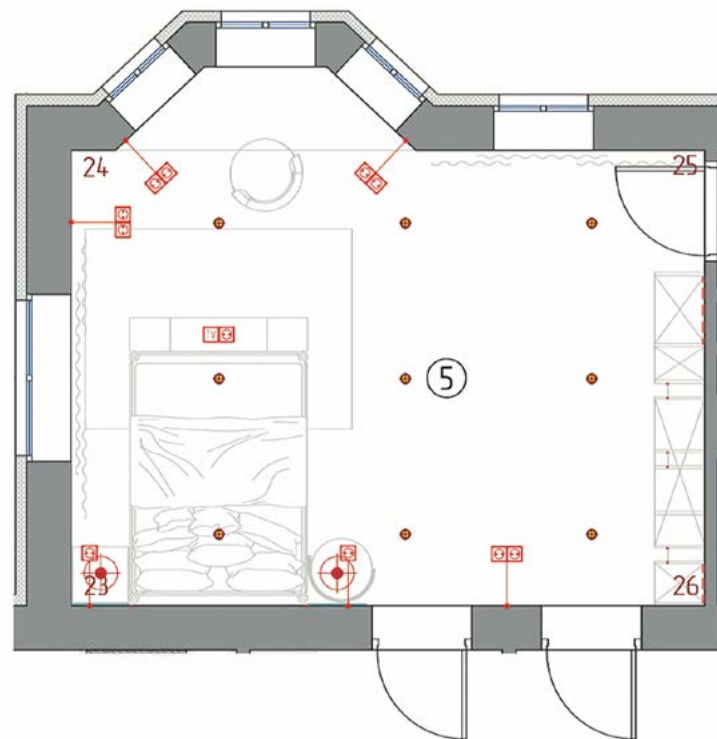


## Daughters area

This area is a story of precise architectural lines, mind bending form aesthetics in a suit with ideal implementation.

Mirrored glass headboard refers to the glass doors in the sitting area downstairs and combined with a mirror wall hidden storage immerse the client into the wonderland world.

Headboard mirror shaped as sun is playing an important role, brining warmth into sleeping area. TV lift hidden at the end of the bed divides the space into resting and study areas.

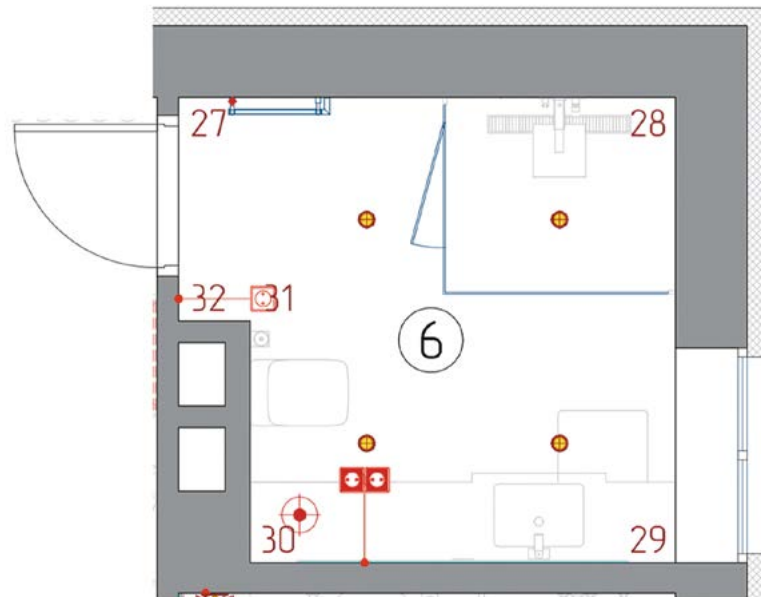




## Bathroom

Place of perfection exquisite details  
and useful boudoir space by the  
window.

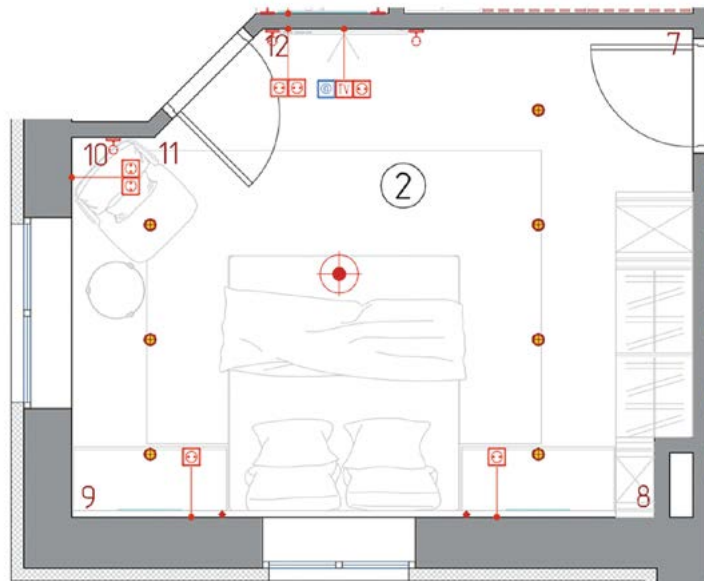
Every girls dream details of brass  
light and cold nudes every surface of  
every shade of pearl gray.





## Son's area

Time for something simple and understandable. Classic light nude, familiar brands and materials. In this area we took more classical approach to create a bedroom to make the client feel very special and very welcome into parents home. The place is made for dreaming and recharging. Here we are continuing our brass story on the cbinetry and cold pastel scheme in the whole mood.

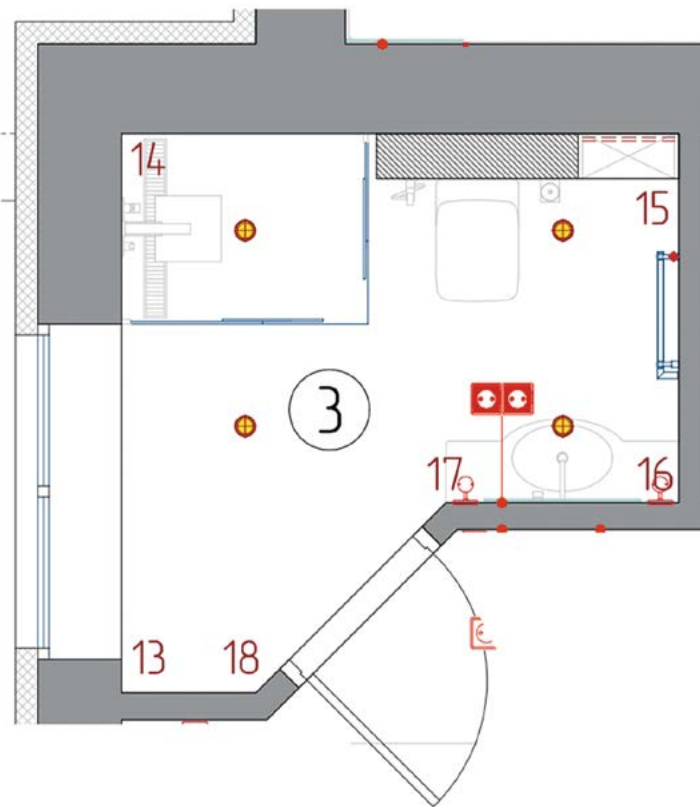




## Bathroom

The classics: white & beige foundations with grey and golden splashes.

Tiniest room in the house yet full of gorgeous details and storage spaces.





## D. Appearance and Finish

---

We did everything possible to make the house as eco-friendly as possible. With attention to interior details we made sure main structure is also build with bricks and natural stone.

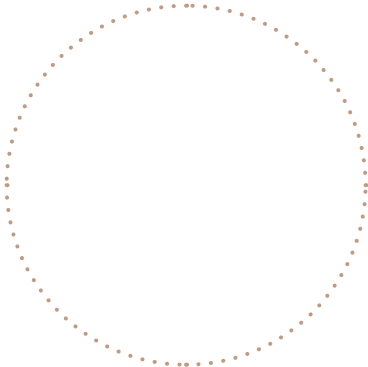
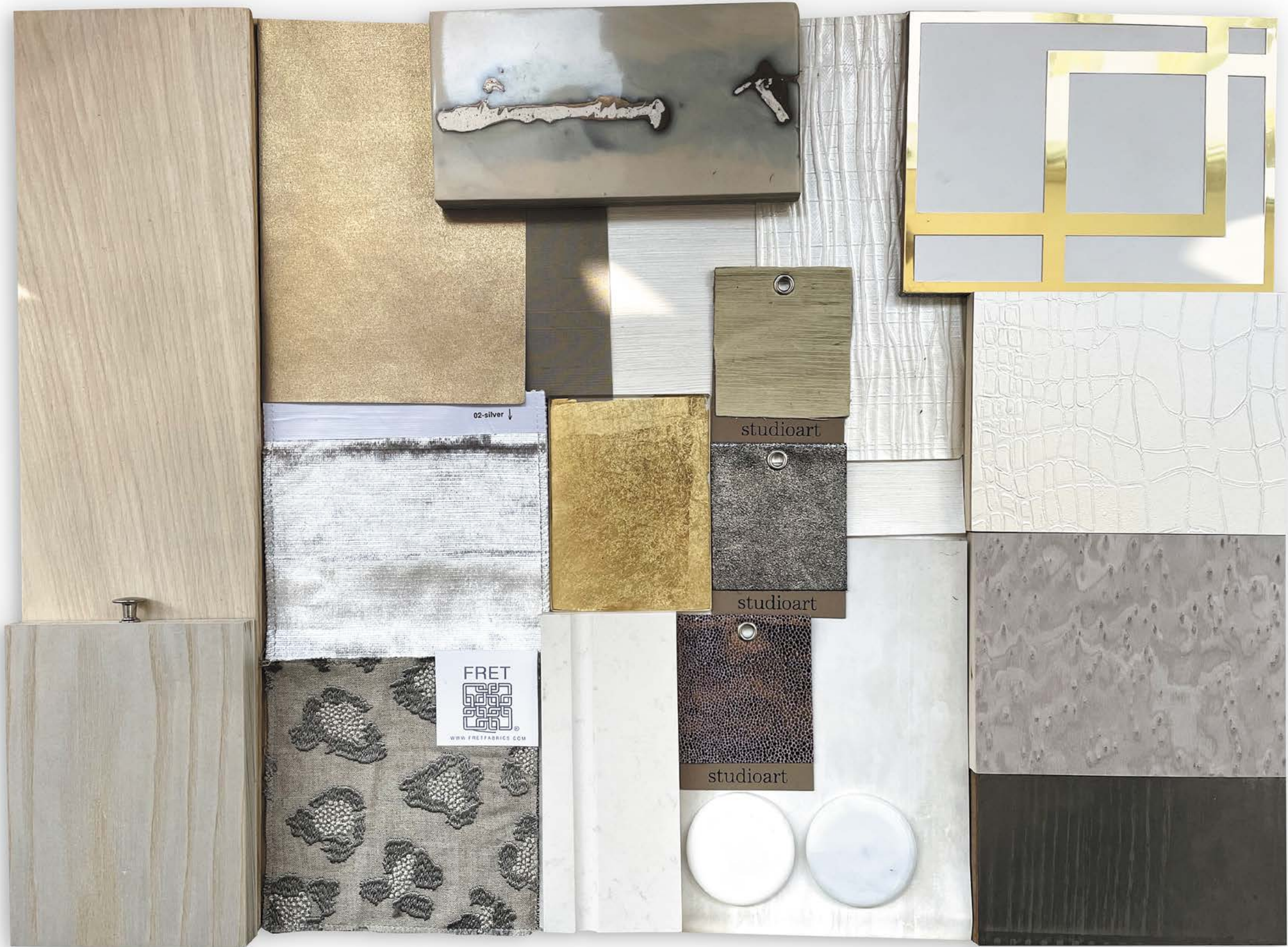
Even Facade Paint by Finch\_Colors is made with silver ionization to insure it's quality and high anti-bacterial efficiency.

We also decided to use a lot of wood in construction and in interior finishes.

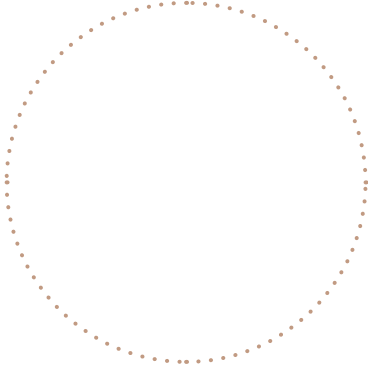




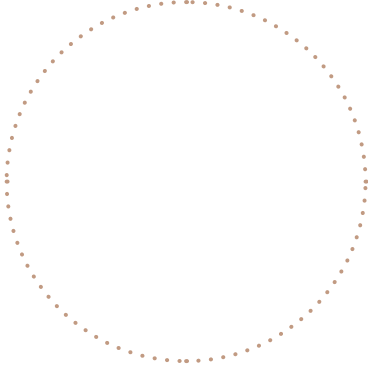
Sample Board



633 Off Piper White  
Silk base



633 Off Piper White  
Matt base



633 Off Piper White  
Gloss base



## Innovative Design Elements

*Nothing makes home more personal as do custom-made interior pieces. We paid great deal of attention to lines, surfaces, finishes and the harmonious interaction in this project as well as we wanted them to be innovative, safe & eco-friendly.*

*Custom designed wavy shaped brass fireplace and glass doors are the braking points of sitting area.*

*The fireplace wall is made of Lapitec Bianca Vittoria Collection in Lux Finish.*





## E. Sustainability, Energy Conservation, Innovation

*To ensure sustainability & Energy conservation we implemented following products and technologies:*

- ◇ Moisture & heat recovery system
- ◇ Smart home
- ◇ Wooden windows with k-glass
- ◇ Silver ionisation paints & finishes
- ◇ Lapitec
- ◇ Treartex

*Lapitec is resistant to heat and freezing, UV rays and scratches. It does not absorb dirt, mould and bacteria and prevents these taking hold.*

*Lapitec is not affected by the rigours of time and is resistant to atmospheric and household agents; it maintains its original appearance after cleaning.*

*Lapitec is also a “green” product, made through a sustainable production process that respects the environment, using 100% natural raw materials and without the use of heavy oils, resins, inks and other petroleum derivatives.*

**Lapitec is an innovative, high performance product guaranteed for 25 years.**



### **UV stable**

*Not affected by UV rays, does not fade*



### **Easy to clean**

*Resistant to stains and easy to clean.*



### **Green**

*Unprinted and 100% natural.*



### **Scratch resistant**

*Resistant to scratches.*



### **Heat resistant**

*Resistant to high temperatures.*



### **Hygienic**

*Discourages growth of fungus and bacteria..*



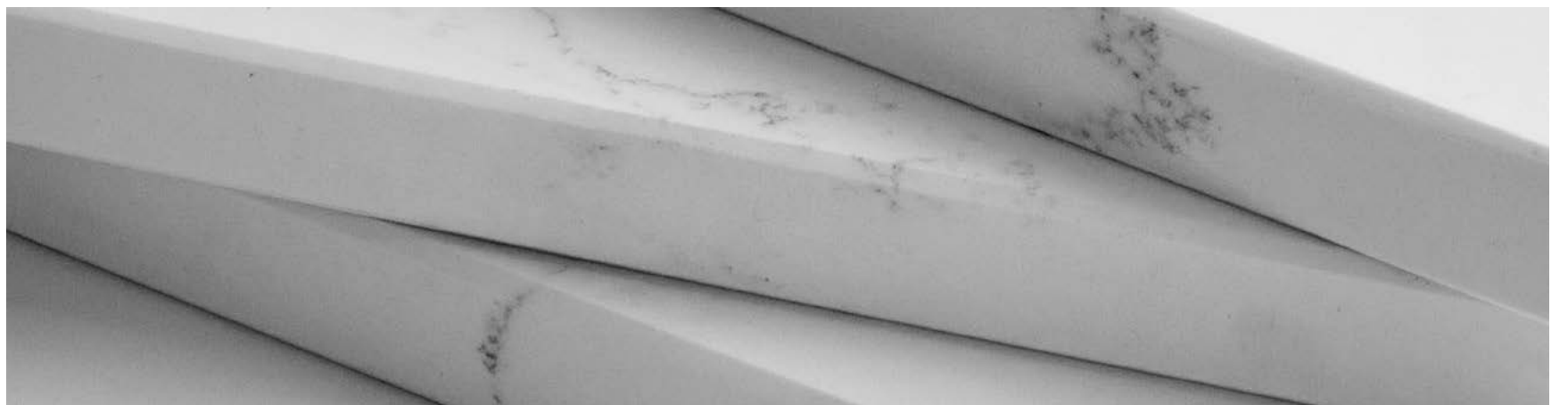
### **Chemical resistant**

*Resistant to chemicals and acids.*



### **Frost resistant**

*Resistant to low temperatures.*







## Innovative Design Elements

*Lapitec Veneto, Italy, created a revolutionary product, 100% Made In Italy and with unique performance qualities.*

*Using innovative technology supported by 25 patents, Lapitec offers design versatility with the guarantee of a precise aesthetic result and consolidated technical performance. It is ideal for kitchen worktops and vertical and horizontal coverings – for both interiors and exteriors – such as, for example, ventilated facades and floors.*

*That is why we also used it on all countertops including kitchen and all bathrooms.*



## E. Moisture & Heat recovery

---

Heat recovery is a method which is increasingly used to reduce the heating and cooling demands (and thus energy costs) of buildings. Heat recovery systems typically recover about 60–95% of the heat in exhaust air and have significantly improved the energy efficiency of buildings

Water vapor diffuses through the membrane. In Winter the supply air is humidified, in cooling conditions dehumidified. Contaminants such as particulate, odors, germs and bacteria cannot pass through.



### Moisture Transfer in Winter

*Moisture is transferred through the special polymer membrane. The supply air is less dry and therefore provides for increased comfort.*



### Dehumidification during Air Conditioning

*Realizes energy savings, the refrigeration systems can be dimensioned much smaller.*



### High Heat Transfer

*Various sizes also allow optimum dimensioning for all ventilation units.*



### Water Vapor Permeable Membrane

*Allows only the transfer of water vapor molecules. Other media such as air, odors, germs and bacteria cannot pass through.*



### Officially Certified

*Performance and hygiene are regularly certified by neutral institutions.*



### Does not freeze

*Since a large part of the humidity is transferred to the supply air, there is normally hardly any condensate that can freeze.*



### Savings in Humidifier Output

*The humidifiers can be smaller in size. The running costs for operation are considerably lower.*



### Minimum Maintenance

*Vapobloc is easy to clean and has no wearing parts.*



## Design Pieces & Innovations

*When it comes to expressing yourself and your individuality through your home, you shouldn't face any restrictions. Our task, as professionals, is to make your home not only beautiful but also as safe as possible on every possible level.*



*With a signature style that juxtaposes raw with refined, melds color, sophistication and spirited spontaneity, and seamlessly blends diverse periods of furniture under one roof, we can revolutionized the look, feel and meaning of modern interior design.*

***In this project we used paint and furniture finishes by Finch Colors, with silver ionization and anti-bacterial efficiency.***

*As we did in this glorious bedroom with a custom headboard and bed TV Lift as we not wanted TV to be the center piece of this room we made this option hidden.*



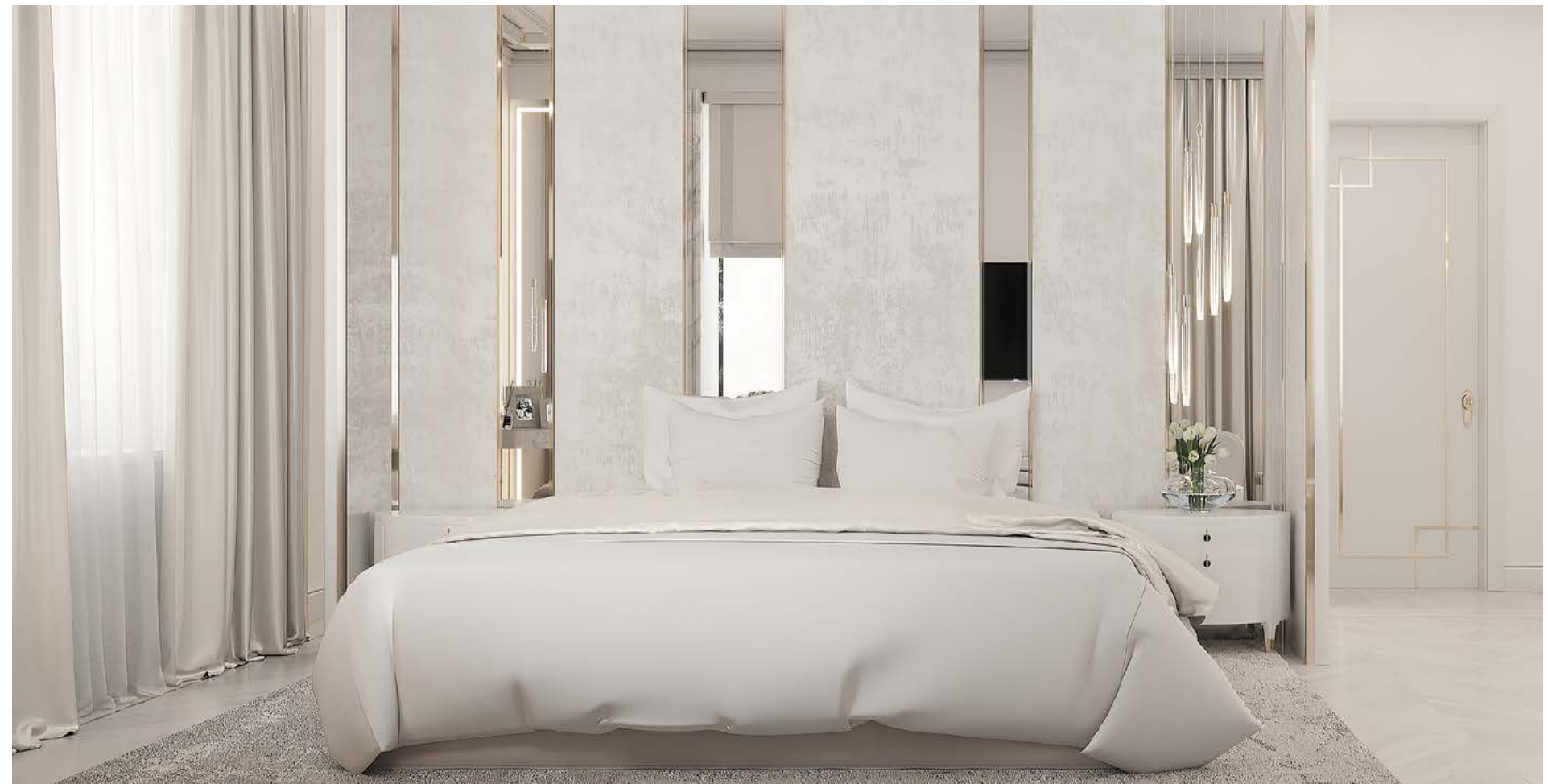
## Design Pieces

---

*Posh yet very subtle bespoke products like this stone finish dresser have this personal touch and feel on every single detail in the master bedroom. Made with Lapitec stone.*

*To ensure that every small detail is just right, once we've ascertained exactly what your vision is, we will provide a range of complementary products for you to view in your property.*

**All upholstery is made with highly non-combustible Treartex materials & fillers.**





## Design Pieces W/Eco Approach

*A muted monochrome palette in this bedroom is supported by almost invisible soaring storage wall made in solid woods with satin mirror glass and Lapitec framed by LED lighting.*

***Followed by hardwood white brushed oak floors with Finch\_Color Laquer ECO Finish.***







*For this area we created a display doors in the closet cabinetry, and side table for reading area all made with solid wood, Tabu veneers & brass.*

***All upholstery is made with highly non-combustible Treartex materials & fillers.***

## Design Pieces

*We create, on all our projects, highly detailed Joinery, Bathroom and Kitchen schematics and detailed drawing and specification packages. That is why we just love to work with bespoke projects.*

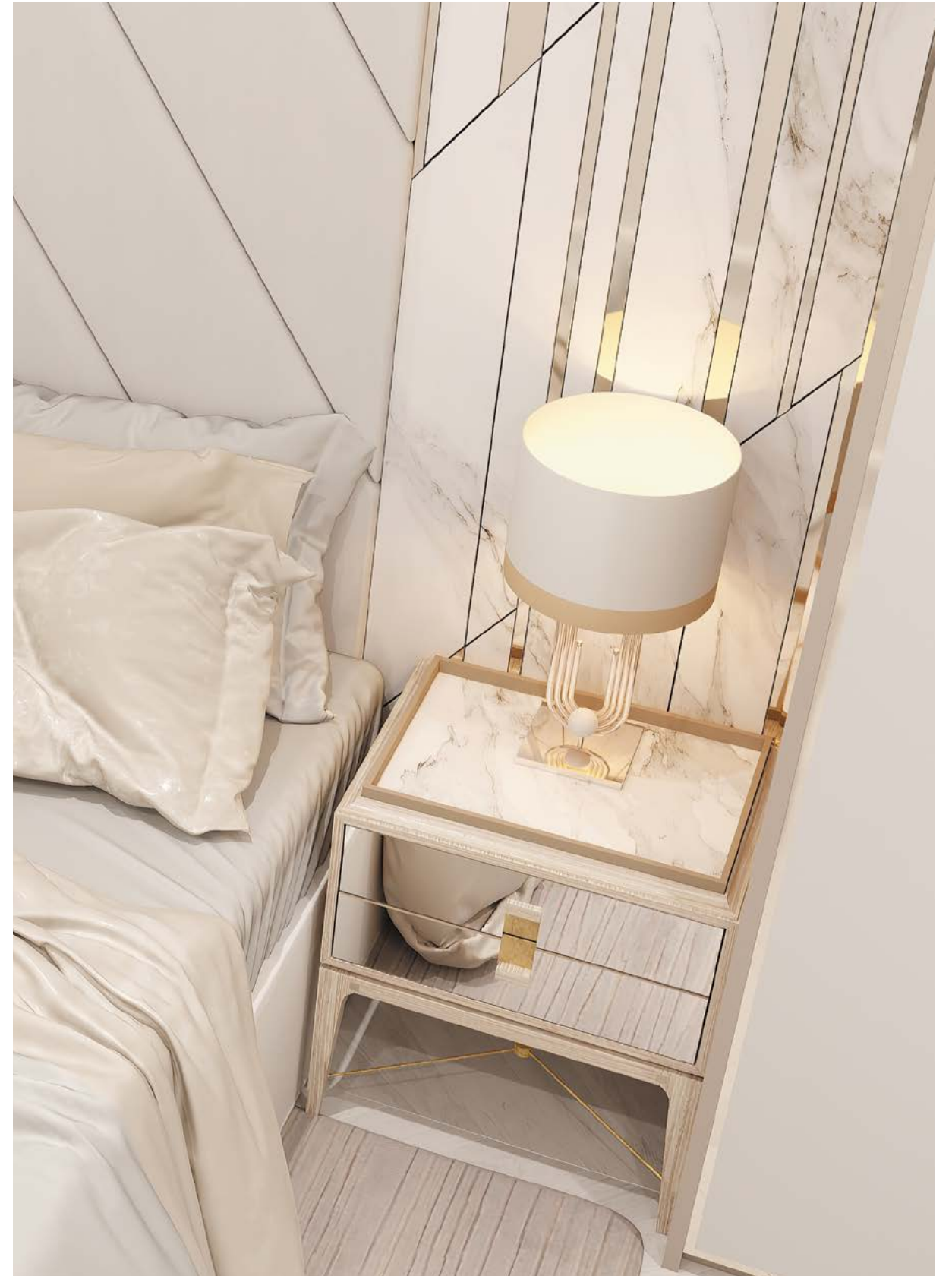




## Design Pieces

*From the very concept development stage, the team made sure that we were on the same wavelength with clients and that the project would be created exactly as intended.*

*Polished brass lines, stone and mirror details linger throughout the project from the custom headboard to the bedside tables and brass handles and greyish Tabu bird's eye maple veneer on a console table in the guest bedroom on the ground floor.*






## F. Safety & Security

Security and efficiency are the main reasons behind the increase in smart home technology use.

SMART HOME in this project allows to remotely control the following options:

- ◇ *Security*
- ◇ *Smoke & Fire Detectors and Alarms*
- ◇ *Appliances*
- ◇ *Thermostats*
- ◇ *Lights*
- ◇ *Curtains*
- ◇ *AC*
- ◇ *Multiroom and Sound system*

The Security & Fire alarm is also connected to the management company to ensure immediate response




### Смартфон

Управляйте «Умным домом» с мобильным приложением

☰


1



2

### Планшет


Управляйте «Умным домом» с планшета, как с подставкой (TabHolder), так и без



3

### Выключатели


Если вы предпочитаете классику — весь функционал дублируют настенные выключатели



4

### Умная колонка Алиса

Управляйте и взаимодействуйте с «Умным домом» через команды голосовому помощнику Алисе





# Victoria Kiorsak

INTERIOR DESIGN

*In Collaboration with*

## ■PROFILDOORS

---

We proud to present the result of collaboration and close work with a technical team, new technologies and materials, we created a new design doors collection by Victoria Kiorsak. The door design for this project was first in the collection.



New Design Series in White Gloss and polished Brass represents era of art-deco, with soft touch finish were created for this project as a perfect frame for this glamorous interior.



PROFILDOORS is indeed oldest and most sufficient Door producer in all eastern Europe since 2002.



The new door collection by Victoria Kiorsak Designs is going to be available worldwide in 2022





# Thank you letter

---

A specialist in high end, luxury residential interior design, Victoria Kiorsak provides clients with the expertise and tools necessary to grasp the vision for their homes. With a focus on bespoke solutions for each client's needs, Victoria and her team provided us with a complete service to take a project from concept to fruition. We were very happy to have their full support throughout the process.

Victoria heartfully believes in the difference between good design and great design and puts all her attention to details.

Her team have proficient site experience and attend regular site meetings with the design team throughout the project to ensure a high standard of co-ordination, detailing and construction were in place on our site.

Needless to say it was not our first experience but definitely the best on with interior design team.

*Helena & Oleg Tsiganoff*

Great as Britain

by

Victoria Kiorsak

INTERIOR DESIGN









